

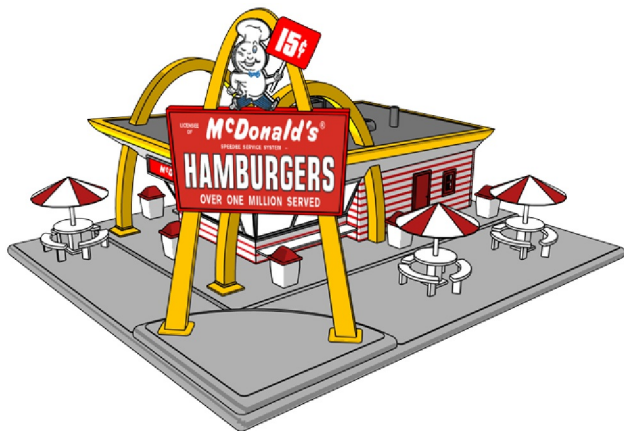
RAIL KING
By MTH Electric Trains

M.T.H.

ELECTRIC TRAINS, INC.

7020 Columbia Gateway Drive
Columbia, MD 21046-1532

www.mth-railking.com



The classic lines of the McDonald's® Ray Kroc built in Des Plaines, Illinois, in 1955 bring an authentic American look to any layout, from the mid-50s to today. With its sturdy ABS construction and easy-to-wire interior lighting, this timeless restaurant will find a permanent home in RailTown™, just as it has in every American town.

Original
McDonald's®

WIRING INSTRUCTIONS

The lighting in the Original McDonald's® can be powered via either track power or by a 9v battery. To set up the building's power, gently turn the restaurant upside down and prop it carefully on a soft surface, so you do not damage the decorated shell. Caution: Because there are different light bulbs for track and battery power, you should choose which method you will use and not try to switch between the two. The 18v bulb has a white socket, and the 9v bulb has a grey socket.

To wire for track power:

With the transformer turned off, connect the AC hot and AC ground wires from the transformer to the two connection ports indicated on the bottom of the base.

The restaurant will be delivered with an 18v bulb (with a white socket) installed, which is the appropriate bulb for track powered lighting. **DO NOT ATTEMPT TO RUN FROM TRACK POWER IF THE 9v BULB (WITH A GREY SOCKET) IS INSTALLED.**

Note: there is an on-off switch on the back side of the restaurant itself. Keep the switch pushed to the right/on position when you operate from track power.

To run lights from a battery:

The restaurant will be delivered with an 18v bulb installed, which is the appropriate bulb for track powered lighting but will be underpowered if used with battery power. Replace the 18v bulb (as described on the next page) with the 9v bulb (with a grey socket) included in the packaging.

Remove the cover from the battery box and install a 9v battery as indicated.

If you power the lights with a battery, you will need to turn them on and off manually when you enjoy your layout. Flip the switch to the left for the on position and to the right for off.

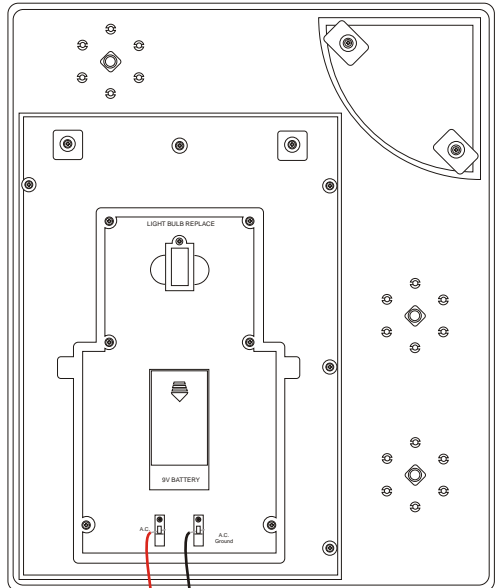


Figure 1. Underside of McDonald's

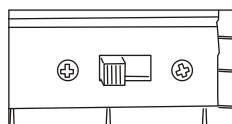
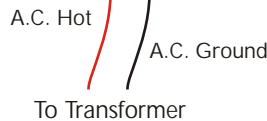
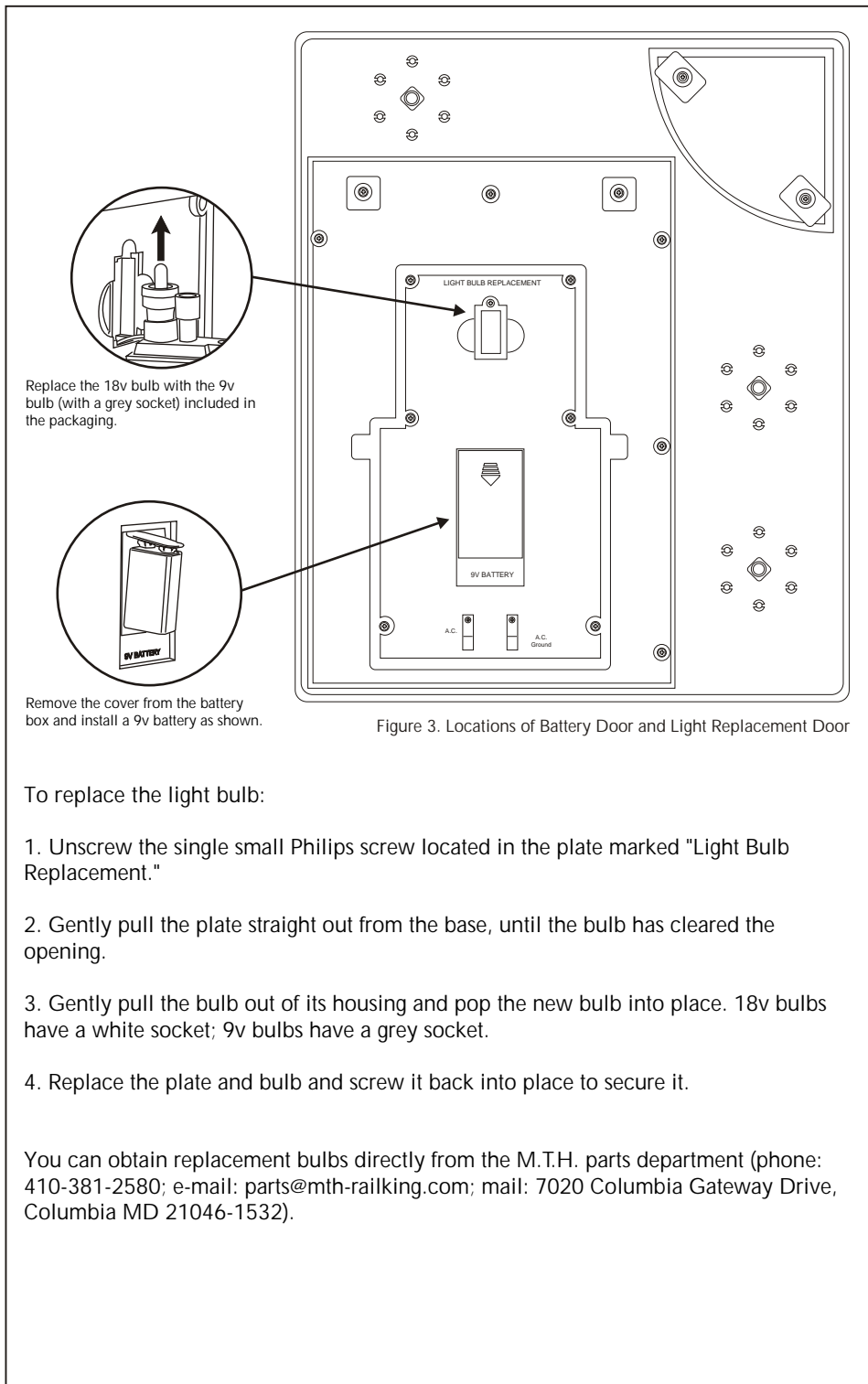


Figure 2. Switch Located on Rear Right Corner of Building

CAUTION: Do not mix old and new batteries. Do not mix alkaline, standard (carbon-zinc), or rechargeable (nickel-cadmium) batteries.



Replace the 18v bulb with the 9v bulb (with a grey socket) included in the packaging.

Remove the cover from the battery box and install a 9v battery as shown.

Figure 3. Locations of Battery Door and Light Replacement Door

To replace the light bulb:

1. Unscrew the single small Philips screw located in the plate marked "Light Bulb Replacement."
2. Gently pull the plate straight out from the base, until the bulb has cleared the opening.
3. Gently pull the bulb out of its housing and pop the new bulb into place. 18v bulbs have a white socket; 9v bulbs have a grey socket.
4. Replace the plate and bulb and screw it back into place to secure it.

You can obtain replacement bulbs directly from the M.T.H. parts department (phone: 410-381-2580; e-mail: parts@mth-railking.com; mail: 7020 Columbia Gateway Drive, Columbia MD 21046-1532).

CAUTION: ELECTRICALLY OPERATED PRODUCT:

Not recommended for children under 10 years of age without adult supervision. As with all electric products, precautions should be observed during handling and use to reduce the risk of electric shock.

WARNING: When using electrical products, basic safety precautions should be followed including the following:

- Read this manual thoroughly before using this device.
- M.T.H. recommends that all users and persons supervising use examine the unit periodically for conditions that may result in the risk of fire, electric shock, or injury to persons, such as damage to the primary cord, plug blades, housing, output jacks or other parts. In the event such conditions exist, the unit should not be used until properly repaired.
- This unit is intended for indoor use. Do not use if water is present. Serious injury or fatality may result.
- Do not operate with damaged wires or clips.
- Do not use this unit for other than its intended purpose. This unit was designed to operate with any AC or DC output toy train transformer. See the transformer's operating instructions for more operating and safety information.

How to Get Service Under the Terms of the Limited One-Year Warranty

For warranty repair, do not return your product to the place of purchase. Instead, follow the instructions below to obtain warranty service, as our dealer network is not prepared to service the product under the terms of this warranty.

1. First, write, call or FAX M.T.H. Electric Trains, 7020 Columbia Gateway Drive, Columbia, MD 21046, (Tel: 410-381-2580; FAX : 410-423-0009; e-mail: service@meth-railking.com), stating when it was purchased and what seems to be the problem. You will be given a return authorization number to assure that your merchandise will be properly handled upon its receipt.
2. CAUTION: Make sure the product is packed in its original factory packaging including its foam and plastic wrapping material so as to prevent damage to the merchandise. The shipment must be prepaid and we recommend that it be insured. *A cover letter including your name, address, daytime phone number, e-mail address (if available), Return Authorization number, a copy of your sales receipt and a full description of the problem must be included to facilitate the repairs. Please include the description regardless of whether you discussed the problem with one of our service technicians when contacting M.T.H. for your Return Authorization number.*
3. Please make sure you have followed the instructions carefully before returning any merchandise for service.

Limited One-Year Warranty

All M.T.H. products purchased from an Authorized M.T.H. Train Merchant are covered by this warranty.

See our website at www.mth-railking.com or call 1-888-640-3700 to identify an Authorized M.T.H. Train Merchant near you.

M.T.H. products are warranted for one year from the date of purchase against defects in material or workmanship, excluding light bulbs and traction tires. We will repair or replace (at our option) the defective part without charge for the parts or labor, if the item is returned to M.T.H. Electric Trains within one year of the original date of purchase. This warranty does not cover damages caused by improper care, handling, or use. Transportation costs incurred by the customer are not covered under this warranty.

Items sent for repair must be accompanied by a return authorization number, a description of the problem, and the **original sales receipt from an Authorized M.T.H. Train Merchant**, which gives the date of purchase. Call 410-381-2580, fax 410-423-0009, or e-mail the Service Department at service@meth-railking.com to obtain a return authorization number.

This warranty gives you specific legal rights, and you may have other rights that vary from state to state.

Service Department
M.T.H. Electric Trains
7020 Columbia Gateway Drive
Columbia MD 21046-1532

©2000, M.T.H. Electric Trains, 7020 Columbia Gateway Drive Columbia, Maryland 21046-1532. RailKing®, M.T.H.®, and RailTown™ are registered trademarks of M.T.H. Electric Trains®. All rights reserved.

©2000 McDonald's, McDonald's, golden arches logo is a registered trademark of McDonald's Corporation and its affiliates.