



M.T.H.

ELECTRIC TRAINS.

7020ColumbiaGatewayDrive
Columbia,MD21046-1532

www.mth-railking.com



Now the town on your layout can act as realistic as your trains. When the RailKing® Operating Watchman Shanty is connected to the activation button or to an ITAD, the watchman comes out and stops traffic before the train goes by and after the train passes he goes back inside the shanty.

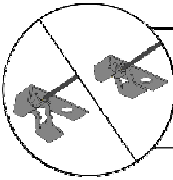
It will be easy to surprise friends and family with the Operating Watchman Shanty when you follow the directions inside.

Operating Watchman Shanty

WIRING INSTRUCTIONS

The RailKing Operating Watchman Shanty is made up of three components: the shanty, figure, and the switch. Before you place the shanty on the layout, you must wire it to the switch and power source. There are two ways you can do this: 1. Hook the platform to the switch, or 2. Hook the platform to an Infrared Track Activation Device (ITAD sold separately). The Operating Watchman Shanty requires 12-16 volts to operate.

Option 1



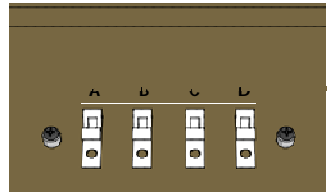
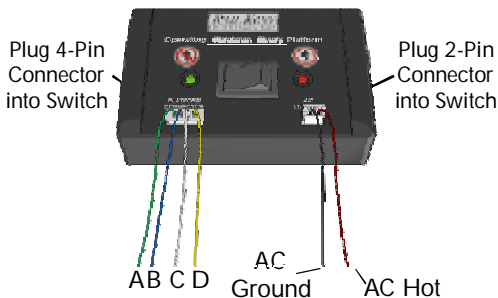
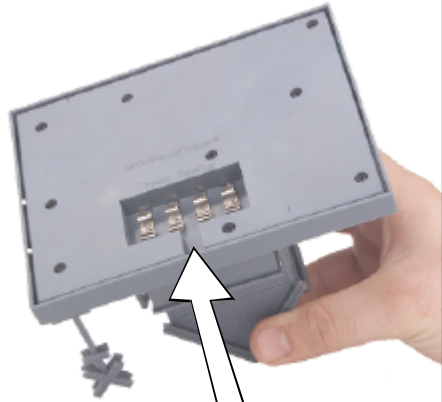
Strip Z-wire cable harness insulation to reveal 1/4" of bare wire.

From 4 Pin Connector

- A** Connect Green wire to terminal A
- B** Connect Blue wire to terminal B
- C** Connect White wire to terminal C
- D** Connect Yellow wire to terminal D

From 2 Pin Connector

- Connect Black wire to AC Ground
- Connect Red wire to AC Hot



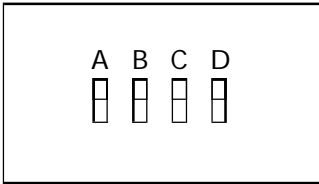
To operate when the shanty is connected to the switch:

Simply flip the switch whenever you want to move the watchman. The green light indicates that the watchman is out and stopping traffic for the train, and the red light indicates that the watchman is inside and no train is coming.

Option 2

Connecting the shanty to an ITAD

Wire the connectors from under the platform to the track and ITAD as shown below. If you choose this option, you will not use the included switch.



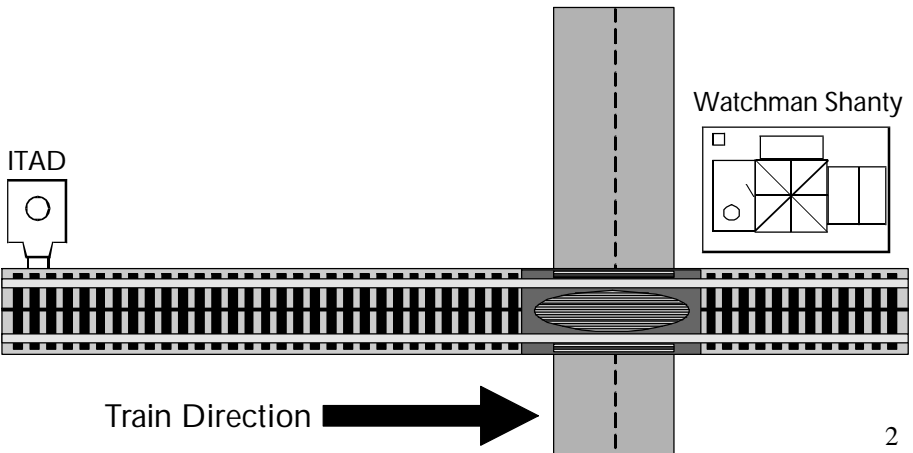
Underside of Watchman Shanty

- A** Center Rail (Transformer AC HOT)
- B** ITAD - N.O. (Normally OPEN)
- C** ITAD - N.C. (Normally CLOSED)
- D** Outer Rail or ITAD - (common) (Transformer AC Ground)

To operate when the shanty is connected to an ITAD

Be sure the ITAD is set to track power and in a location where the train will activate it before the train reaches the shanty. You should set the ITAD for a 10-15 second delay after the train has moved past it, so that people viewing the layout have time to see the watchman stop traffic before the train reaches the traffic intersection. You may want to adjust the sensitivity of the ITAD to work best with the distance of the train and operators on your layout.

M.T.H. suggests the layout shown in the diagram below as one option when using an ITAD: Place the ITAD as far away as possible w/ the maximum delay (15 seconds).



SET UP

After you wire the Watchman Shanty and place it on your layout, you will need to place the figure on its guide.

1. Let the Watchman Shanty cycle one time so that the door is open and the figure guide is out of the shanty. (Figure 2)

2. Place the figure on the guide so that his left hand is closest to the shanty doorway. Insert the tab under his feet into the guide. (Figure 3)

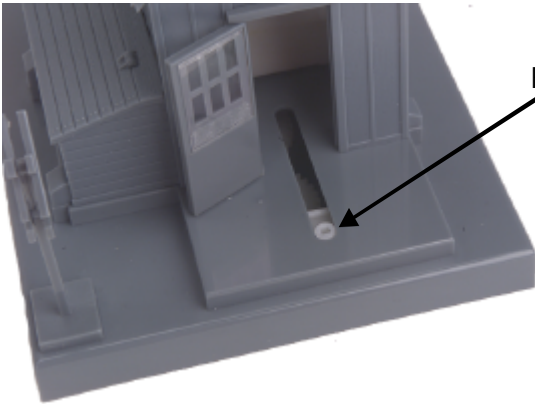


Figure 2



Figure 3

Place Tab into Guide

CHANGING THE LIGHT BULBS

When the interior lights burn out, replace them by following the steps below.

- 1) Remove the roof by pulling upward. (Figure 4)
- 2) Unscrew the light bulb mounting bracket. (Figure 5)
- 3) Pull out the old bulb and replace it with a new one using the same socket. (Figure 6)
- 4) Reassemble in reverse order.

You can obtain replacement bulbs directly from the M.T.H. Parts Department
phone: 410-381-2580

e-mail: parts@mth-railking.com

mail: 7020 Columbia Gateway Drive, Columbia MD 21046-1532).



Figure 4

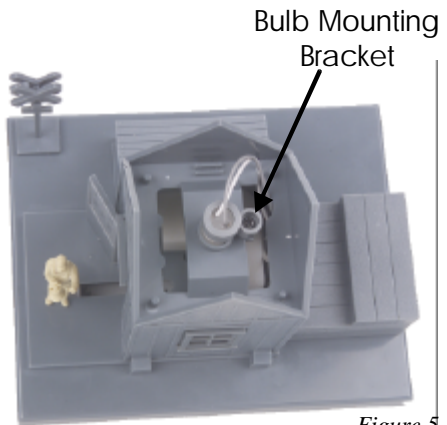


Figure 5

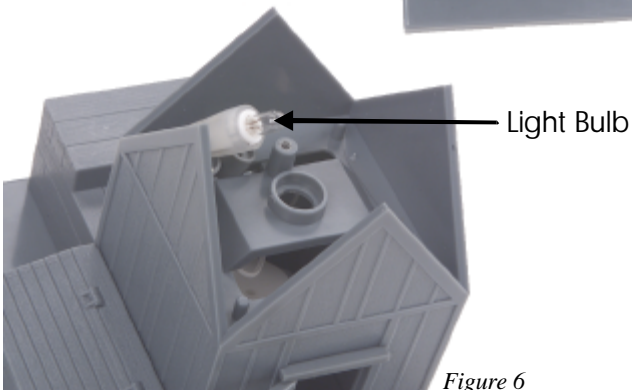


Figure 6

CAUTION: ELECTRICALLY OPERATED PRODUCT:

Not recommended for children under 8 years of age without adult supervision. As with all electric products, precautions should be observed during handling and use to reduce the risk of electric shock.

WARNING: When using electrical products, basic safety precautions should be followed including the following:

- Read this manual thoroughly before using this device.
- M.T.H. recommends that all users and persons supervising use examine the unit periodically for conditions that may result in the risk of fire, electric shock, or injury to persons, such as damage to the primary cord, plug blades, housing, output jacks or other parts. In the event such conditions exist, the unit should not be used until properly repaired.
- This unit is intended for indoor use. Do not use if water is present. Serious injury or fatality may result.
- Do not operate with damaged wires or clips.
- Do not use this unit for other than its intended purpose. This unit was designed to operate with any AC or DC output toy train transformer. See the transformer's operating instructions for more operating and safety information.

Service & Warranty Information

How to Get Service Under the Terms of the Limited One-Year Warranty

When you suspect an item is defective, please check the operator's manual for standard operation and trouble-shooting techniques that may correct the problem. Additional information may be found on the M.T.H. Website. Should you still require service, follow the instructions below to obtain warranty service.

First, e-mail, write, call or fax a M.T.H. Authorized Service Center (ASC) in your area to obtain Repair Authorization. You can find the list of ASCs on the M.T.H. Website, www.mth-railking.com. Authorized Service Centers are required to make warranty repairs on items sold *only* from that store; all other repairs may or may not be done at the store's own discretion. If you did not purchase the item directly from the ASC, you will need to select a National Authorized Service Center (NASC). These centers are compensated by M.T.H. to perform warranty service for any customer whose repair qualifies for warranty service. A list of NASC retailers can be located on the M.T.H. Website or by calling 1-888-640-3700. Should the warranty no longer apply, you may choose either an ASC or NASC retailer to service your M.T.H. Product. A reasonable service fee will be charged.

CAUTION: Make sure the product is packed in its original factory packaging including its foam and plastic wrapping material to prevent damage to the merchandise. There is no need to return the entire set if only one of the components is in need of repair *unless otherwise instructed by the Service Center. The shipment must be prepaid and we recommend that it be insured. A cover letter including your name, address, daytime phone number, e-mail address (if available), Return Authorization number (if required by the service center, a copy of your sales receipt and a full description of the problem must be included to facilitate the repairs. Please include the description regardless of whether you discussed the problem with a service technician when contacting the Service Center for your Return Authorization.*

Please make sure you have followed the instructions carefully before returning any merchandise for service. Authorized M.T.H. Service Centers are independently owned and operated and are not agents or representatives of M.T.H. Electric Trains. M.T.H. assumes no responsibility, financial or otherwise, for material left in their possession, or work done, by privately owned M.T.H. Authorized Service Centers.

If you need assistance at any time email MTH Service at service@mth-railking.com, or call 410381-2580.

Limited One-Year Warranty

All M.T.H. products purchased from an Authorized M.T.H. Train Merchant are covered by this warranty.

See our website at www.mth-railking.com or call 1-888-640-3700 to identify an Authorized M.T.H. Train Merchant nearby.

M.T.H. products are warranted for one year from the date of purchase against defects in material or workmanship, excluding wear items such as light bulbs, pick-up rollers, batteries, smoke unit wicks, and traction tires. We will repair or replace (at our option) the defective part without charge for the parts or labor, if the item is returned to an M.T.H. Authorized Service Center (ASC) or M.T.H. National Authorized Service Center (NASC) within one year of the original date of purchase. This warranty does not cover damages caused by improper care, handling, or use. Transportation costs incurred by the customer are not covered under this warranty.

Items sent for repair must be accompanied by a return authorization number, a description of the problem, and **a copy of the original sales receipt from an Authorized M.T.H. Train Merchant**, which gives the date of purchase. If you are sending this product to an Authorized Service Center, contact that Center for their return authorization.

This warranty gives you specific legal rights, and you may have other rights that vary from state to state. Specific questions regarding the warranty may be forwarded to M.T.H. directly.



AUTHORIZED SERVICE CENTER

7020 Columbia Gateway Dr. - Columbia, MD 21046

Information: 410-381-2580 Fax: 410-381-6122

www.mth-railking.com

PARTICIPATING N.A.S.C. RETAILER LIST

CANADA

TOYTRAINWORKSHOP
CUMBERLAND
613-833-3125

THETRAINROOM
ERGUS
519-787-3280

CALIFORNIA
TINPLATEJUNCTION
OAKLAND
510-444-4780

COLORADO

MIZELLTRAINSINC
WESTMINSTER
303-429-4811

CONNECTICUT

NEW ENGLANDHOBBY
SUPPLY
MANCHESTER
860-646-0610

FLORIDA

ROUNDHOUSEOUTH
PORT ORANGE
386-304-7002

MARYLAND

PLAZAHOBBY
CUMBERLAND
301-729-6424

ENGINE HOUSEHOBBIES
GAITHERSBURG
301-590-0816

CATOCINMOUNTAINTRAINS
THURMONT
301-694-8331

MICHIGAN

MICHIGANMODELTRAIN
CENTER
PINCKNEY
734-426-1651

BRASSEUR ELECTRICTRAINS,
INC.
SAGINAW
989-793-4753

NEWHAMPSHIRE

TREASUREDTOYS
SALEM
603-898-7224

NEWYORK

AURORARAILS&HOBBIES
EASTAURORA
716-652-5718

OHIO

DAVISELECTRONICS
MILFORD
513-831-6425

RICK'STOYTRAINS
TOLEDO
419-478-0171

PENNSYLVANIA

BUSSINGERTRAINS
AMBLER
215-628-2366

FAIRCHANCEPHARMACY
FAIRCHANCE
724-564-7817

THESTATION
NEWCUMBERLAND
717-774-7096

VIRGINIA

LOCUST GROVETRAINS
LOCUST GROVE
540-854-8955

DAVIS HOBBYSUPPLIES
PORTSMOUTH
757-397-1983

T S G HOBBIES
WARRENTON
540-347-9212

WISCONSIN

SOMMERFELD'STRAINS
BUTLER
262-783-7797

GRAMPA'STRAINSHOP
RICELAKE
715-234-2996



AUTHORIZED SERVICE CENTER

7020 Columbia Gateway Dr. - Columbia, MD 21046
Information: 410-381-2580 Fax: 410-381-6122

www.mth-railking.com

PARTICIPATING A.S.C. RETAILER LIST

CANADA

TOYTRAINWORKSHOP
CUMBERLAND
613-833-3125

THETRAINROOM
ERGUS
519-787-3280

CREDITVALLEYRAILWAY
COMPANY
STREETSVILLE
905-826-1306

B&HTRAINS
TERREBONNE, QUEBEC
450-492-0317

ALABAMA

SOUTHERLANDSTATION
HUNTSVILLE
256-533-4720

LIL'BOBBY'SHOBBIES
MONTGOMERY
334-277-1715

ARIZONA

ARIZONATRAINDEPOT
MESA
480-833-9486

CENTRALCOASTTRAINS
ATASCADERO
805-466-1391

CALIFORNIA

CENTRALCOASTTRAINS
ATASCADERO
805-466-1391

TRAINSHACK
BURBANK
818-842-3330

ROUNDHOUSE
NORTHHOLLYWOOD
818-769-0403

DOLLHOUSES, TRAINS &
MORE
NOVATO
415-883-0388

TIN PLATEJUNCTION
OAKLAND
510-444-4780

RON'S WORLD
SAN CLEMENTE
949-361-5596

TRUCKS & TRAINS HOBBIES
SANTAROSA
707-537-6586

COLORADO

CUSTOMRAILWAYSUPPLY
COLORADOSPRINGS
719-634-4616

MIZELLTRAINSINC
WESTMINSTER
303-429-4811

CONNECTICUT

NEWENGLANDHOBBY
SUPPLY
MANCHESTER
860-646-0610

DELAWARE

KRRBMODELTRAINSINC.
NEWARK
302-292-2779

FLORIDA

HOLLYWOODSTATION
HOLLYWOOD
954-921-2700

DEPOTHOBBYSHOP
LAKE WORTH
561-585-1982
READYTOROLL
MIAMI
305-688-8868

FRANK'S TRAINS & HOBBIES
INC.
OLDSMAR
813-855-1041

COLONIALPHOTO & HOBBY
ORLANDO
407-841-1485

WARRICKCUSTOMHOBBIES
PLANTATION
954-370-0708

ROUNDHOUSE SOUTH
PORTORANGE
386-304-7002

ILLINOIS

BIKE & CHOOCHOO
CONNECTION
SCHAUMBURG
847-882-7728

INDIANA

Y.O.R.K. TRAINS
MUNSTER
219-838-9999

SAMUELSON'S TRAINSHOP
VALPARAISO
219-462-2708

IOWA

CABOOSESTOPHOBBIES
CEDAR FALLS
800-642-7012

KENTUCKY

L&N TRAINS & THINGS
LOUISVILLE
502-897-9005

LOUISIANA

AMERICA'S TRAIN YARD
BATON ROUGE
225-926-5592

MAINE

WHEELS, WINGS & THINGS
LUDLOW
207-532-6277

MARYLAND

PLAZA HOBBY
CUMBERLAND
301-729-6424

HOBBY TOWN USA
FREDERICK
301-694-7395

ENGINE HOUSE HOBBIES
GAITHERSBURG
301-590-0816

J & B TRAINS
HAGERSTOWN
240-420-4930

THE TRAIN ROOM
HAGERSTOWN
301-745-6681

PURKEY'S TOY TRAINS
SYKESVILLE
410-549-6061

CAT OCTIN MOUNTAIN TRAINS
THURMONT
301-694-8331

N & W TRAINS HED
WILLIAMSPORT
301-223-8801

MASSACHUSETTS

NORTHEAST TRAINS
PEABODY
978-532-1615
EAST BAY HOBBIES
SEEKONK
508-336-5573

MICHIGAN

MICHIGAN MODEL TRAIN
CENTER
PINCKNEY
734-426-1651

BRASSEUR ELECTRIC TRAINS,
INC.
SAGINAW
989-793-4753

MISSOURI

SWITCH STAND
SAINT LOUIS
314-781-4458

MARK TWAIN HOBBY CENTER
ST. CHARLES
636-946-2816

NEVADA

RENO RAILS
RENO
775-337-6669

NEW HAMPSHIRE

RAILROAD SPECIALTIES
NASHUA
603-801-0801

TREASURED TOYS
SALEM
603-898-7224

NEW JERSEY

COUNTRY AND STUFF
ANDOVER
973-786-7086

COLUMBUS TRAIN STATION
COLUMBUS
609-518-1800

ATLANTIC RAILS
HAMMONTON
609-567-8490

GRAND CENTRAL STATION
KEARNY
201-955-6200

J & B TRAINS, INC.
MAPLESHADE
856-414-0092

HOBBY SHOP
MATAWAN
732-583-0505

HOBBY MASTERS, INC
REDBANK
732-842-6020

RIDGEFIELD HOBBY
RIDGEFIELD
201-943-2636

TRAINS & THINGS
TRENTON
609-883-8790

COAST TRAINS AND
COLLECTIBLES
WALL
732-556-9005

HOLLY BEACH TRAIN DEPOT
WILDWOOD
609-522-2379

NEW YORK

AURORA RAILS & HOBBIES
EASTAURORA
716-652-5718

NASSAU HOBBY CENTER, INC.
FREEPORT
516-378-9594

HOBBY WORLD
MONTICELLO
845-794-8770

CITY DEPOT, INC.
NEWHAMPTON
845-374-3010

AMERICAN STORE
TIVOLI
845-757-4246

KROSS HARDWARE
WEST BABYLON
631-669-3069

NORTH CAROLINA

THE ROUNDHOUSE &
BACKSHOP
CARY
919-465-0810

TRAINS LTD.
CHARLOTTE
704-566-9070

DRY BRIDGE STATION
MOUNTAIRY
336-786-9811

THE FREIGHTYARD
SMITHFIELD
919-934-6229

TRAIN LOFT
WINSTON-SALEM
336-760-9817

OHIO

GLEN'S TRAIN SHOP
AKRON
330-253-6527

E & S TRAINS
AKRON
330-745-0785

T & K HOBBY SHOP
BRIDGEPORT
740-633-6607

SCHAFFNER'S TRAINS
CANTON
330-452-4444

TRAINS-N-THINGS
CANTON
330-499-1666

PARMAHOBBY
CLEVELAND
216-741-6440

SANDY'SHOBBY'S&
COLLECTIBLES
ELYRIA
440-365-9999

HUDSONTOY, TRAIN&
HOBBY
HUDSON
330-653-2997

CLEARVIEWTRAIN&HOBBY
LORAIN
440-277-4488

DIXIEUNIONSTATION
MASON
513-459-0460

DAVISELECTRONICS
MILFORD
513-831-6425

GRANDPACIFIC JUNCTION
OLMSTEADFALLS
440-235-4777

RICK'STOYTRAINS
TOLEDO
419-478-0171

ERIERAILWAYDEPOT
TROY
937-440-9972

PENNSYLVANIA
AMERICANHOBBYCENTER
ALIQUIPPA
724-378-3930

ALLENTOWNTOYTRAIN
SERVICE
ALLENTOWN
610-821-0740

ONTHERIGHTTRACK
ALTOONA
814-942-4345

BUSSINGERTRAINS
AMBLER
215-628-2366

YEOLDETRAIN&CHRISTMAS
SHOPPE
BOYERTOWN
610-369-0755

CHARLEROISSWEEPER
CENTER
CHARLEROI
724-483-3397

CRANBERRYHOBBYDEPOT
CRANBERRYTWP
724-776-3640

FAIRCHANCEPHARMACY
FAIRCHANCE
724-564-7817

TOYTRAINSTATION
FEASTERVILLETREV
215-322-5182

THE CABOOSE
LEIGHTON
570-386-5352

HOBBYCITY
McMURRAY
724-942-2557

THE STATION
NEWCUMBERLAND
717-774-7096

FRYER'SSTORE
ORWIGSBURG
570-366-2258
CHESTNUTTOYBOX
PHILADELPHIA
215-545-0455

TOBYTYLER'SHOBBY
CENTER
PITTSBURGH
412-653-5030

C. T. MCCORMICK HARDWARE
ZELIENOPE
724-452-6130

SOUTH CAROLINA
EMERALDTRAIN&HOBBY
GREENWOOD
864-223-2247

TENNESSEE
MODELRAILROAD & HOBBY
SHOP
MEMPHIS
901-384-6500

TEXAS
HOBBYTIME
AMARILLO
806.352.9660

RIVERVIEWTRAINS
ANGLETON
979-848-3895

GREATTRAINS&HOBBIES
LONGVIEW
903-757-2720

VIRGINIA
LOCUSTGROVETRAINS
LOCUSTGROVE
540-854-8955

TRAINS, ETC.
LORTON
703-550-1779

TRAIN DEPOT
MANASSAS
703-335-2216

CHESTERFIELDHOBBIIES
MIDLOTHIAN
804-379-9091

DAVIS HOBBYSUPPLIES
PORTSMOUTH
757-397-1983

TOYTRAINCENTER
RICHMOND
804-288-4475

T S G HOBBIES
WARRENTON
540-347-9212

NORGESTATION
WILLIAMSBURG
757-564-7623

WESTVIRGINIA
PATRICK'STRAINS
WHEELING
304-232-0714

WISCONSIN
SOMMERFELD'STRAINS
BUTLER
262-783-7797

WOODCRAFTER'S
BURLINGTON
262-763-5239

HOBBYOUTLET
FONDDULAC
920-924-3770

G B T V & TRAINS
GREENBAY
920-496-9697

GRAMPA'STRAINSHOP
RICELAKE
715-234-2996

THETRAINSTORE
WAUKESHA
262-650-6675