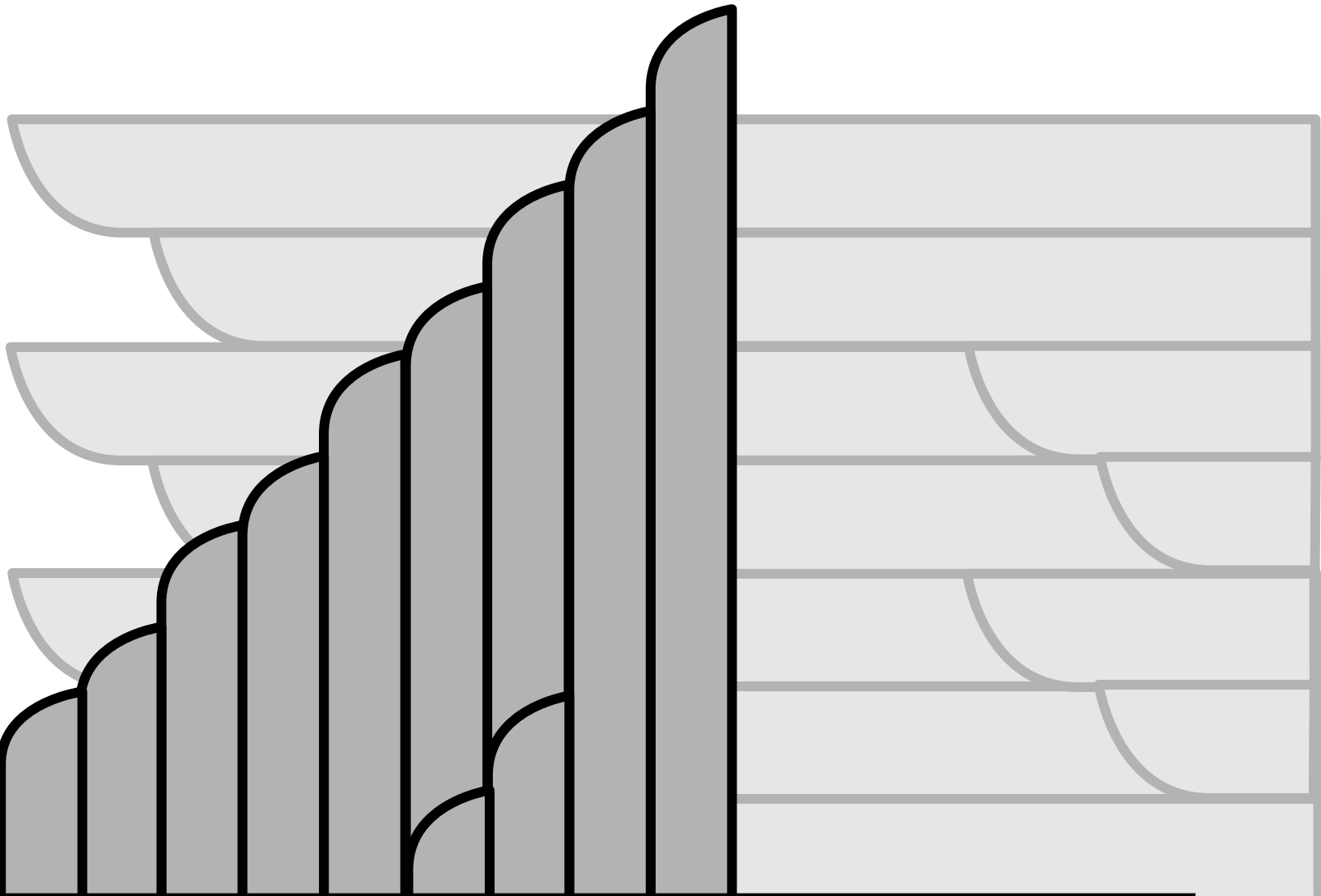


RAIL KING
By MTH Electric Trains

Hiawatha

4-6-4

Item Number: 30-1127-1

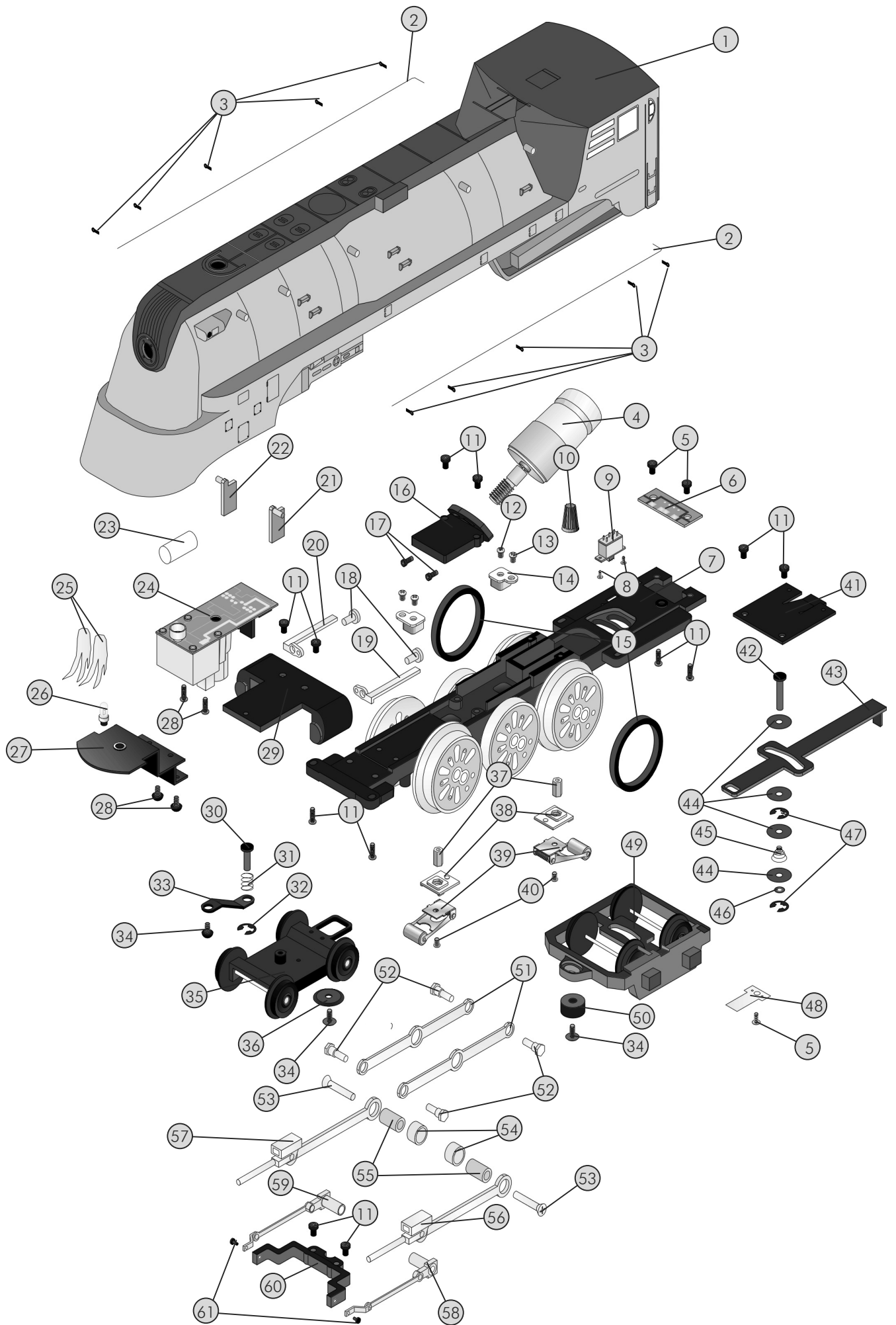


Railking Hiawatha

Parts

Name and Number	Part #	Price Per Unit	Name and Number	Part #	Price Per Unit
1.) Shell (Hiawatha)(# 100)	FB-1200105	*150.00	58.) Eccentric assembly (left)	ED-1220019	5.00
2.) Handrail (boiler)	FB-1200106	2.00	59.) Eccentric assembly (right)	ED-1210019	5.00
3.) Stanchion	FB-1200024	0.25	60.) Motion hanger	EA-1200009	4.00
4.) Motor	BE-0000047	25.00	61.) Screw	IA-0000119	0.15
5.) Screw	IA-0000021	0.15			
6.) PCB board	BB-0000019	8.00			
7.) Drive block (3 axle)	DF-1200020	*75.00			
8.) Screw	IA-0000058	0.15			
9.) Switch (small)	BB-0000009	5.00			
10.) Wire nut (yellow)	BI-4500003	0.25			
11.) Screw	IA-0000050	0.15			
12.) Screw	IA-0000015	0.15			
13.) Screw	IA-0000016	0.15			
14.) Insulator (pick-up)(top)	BD-0000047	2.00			
15.) Traction tire	DE-0000027	.75			
16.) Motor mount	BI-0000037	15.00			
17.) Screw	IA-0000089	0.15			
18.) Screw	IA-0000051	0.15			
19.) Drive rod guide (left)	EA-1220006	3.00			
20.) Drive rod guide (right)	EA-1210006	3.00			
21.) Lens (marker light)(green)(L)	FA-1220011	1.00			
22.) Lens (marker light)(green)(R)	FA-1210011	1.00			
23.) Lens (headlight)	FA-0000011	2.00			
24.) Smoke unit	AA-0000015	50.00			
25.) Smoke wick	AA-0000001	1.00			
26.) Bulb (18V)	CA-0230001	1.00			
27.) Bracket (headlight/smoke unit)	IH-0000090	3.00			
28.) Screw	IA-0000003	0.15			
29.) Steam chest	EF-1230007	15.00			
30.) Pin	IG-0000003	0.50			
31.) Spring	IE-0000009	0.50			
32.) E-clip	IF-0000004	0.15			
33.) Bracket (lead truck mounting bracket)	IH-1230001	1.00			
34.) Screw	IA-0000214	0.15			
35.) Truck (leading)(2 axle)	DA-1230004	20.00			
36.) Spacer	ID-0000014	1.00			
37.) Nut	IC-0000005	0.50			
38.) Insulator (pick-up)(bottom)	BD-0000001	2.00			
39.) Pick-up	BD-0000048	5.00			
40.) Screw	IA-0000164	0.15			
41.) Bracket (PCB board extension)	IH-0000091	3.00			
42.) Pin	IG-0000002	0.50			
43.) Draw bar	FB-1200107	3.00			
44.) Washer	ID-0000054	0.15			
45.) Spring	IE-0000013	0.50			
46.) Washer	ID-0000053	0.15			
47.) E-clip	IF-0000009	0.15			
48.) Ground strap	II-4500002	1.00			
49.) Truck (trailing)(2 axle)	DA-1240027	20.00			
50.) Spacer	ID-0000063	1.00			
51.) Side rod	EC-1250003	2.00			
52.) Bolt	IA-0000054	1.00			
53.) Screw	IA-0000052	1.00			
54.) Sleeve (inner)	ID-0000058	1.00			
55.) Sleeve (outer)	ID-0000059	1.00			
56.) Drive rod (left)	EC-1220010	5.00			
57.) Drive rod (right)	EC-1210010	5.00			

*Requires Exchange



Tender

Proto-sound Parts

Name and Number	Part #	Price Per Unit
1.) Shell (Milwaukee Road)	GA-1200046	*85.00
2.) Proto-sound board (top)	AE-4500001	*100.00
3.) Proto-sound chip	N/A	*19.95
4.) Proto-sound board (bottom)	AD-4500001	*60.00
5.) Screw	IA-0000022	0.15
6.) Bracket (speaker)	IH-0000002	1.00
7.) Speaker	BF-4500001	8.95
8.) Screw	IA-0000003	0.15
9.) Insulator washer	ID-0000025	0.15
10.) Insulator	ID-0000024	0.15
11.) Heat sink	AI-0000017	2.00
12.) Screw	IA-0000019	0.15
13.) Wire harness (tender)	BC-1200006	8.00
14.) Battery leads	BC-0000003	3.00
15.) Battery	BG-4000001	9.95
16.) Bracket	IH-0000072	2.00
17.) Volume pot	BI-4500001	5.00
18.) Bracket (volume pot)	IH-0000023	2.00
19.) Screw	IA-0000072	0.15
20.) Washer	ID-0000034	0.15
21.) Nut	IC-0000007	0.50
22.) Chassis	GB-1200028	*15.00
23.) Screw	IA-0000040	0.15
24.) Screw	IA-0000214	0.15
25.) Screw	IA-0000021	0.15
26.) Truck (tender)(3 axle)(lead)	DA-1230017	30.00
27.) Draw bar (12.5X63.0X1.4)	GA-1200047	3.00
28.) Truck (tender)(3 axle)(trailing)	DA-1240026	30.00
29.) T-bar	IG-0000001	0.50
30.) Proto-coupler	DD-0000004	10.00
31.) Spring	IE-0000022	0.50
32.) Washer	ID-0000026	0.15
33.) E-clip	IF-0000002	0.15

*REQUIRES EXCHANGE

