

RAIL KING
By M.T.H. Electric Trains

30-4049-0

Blue Comet

4-6-2



GL081601

REV.061603



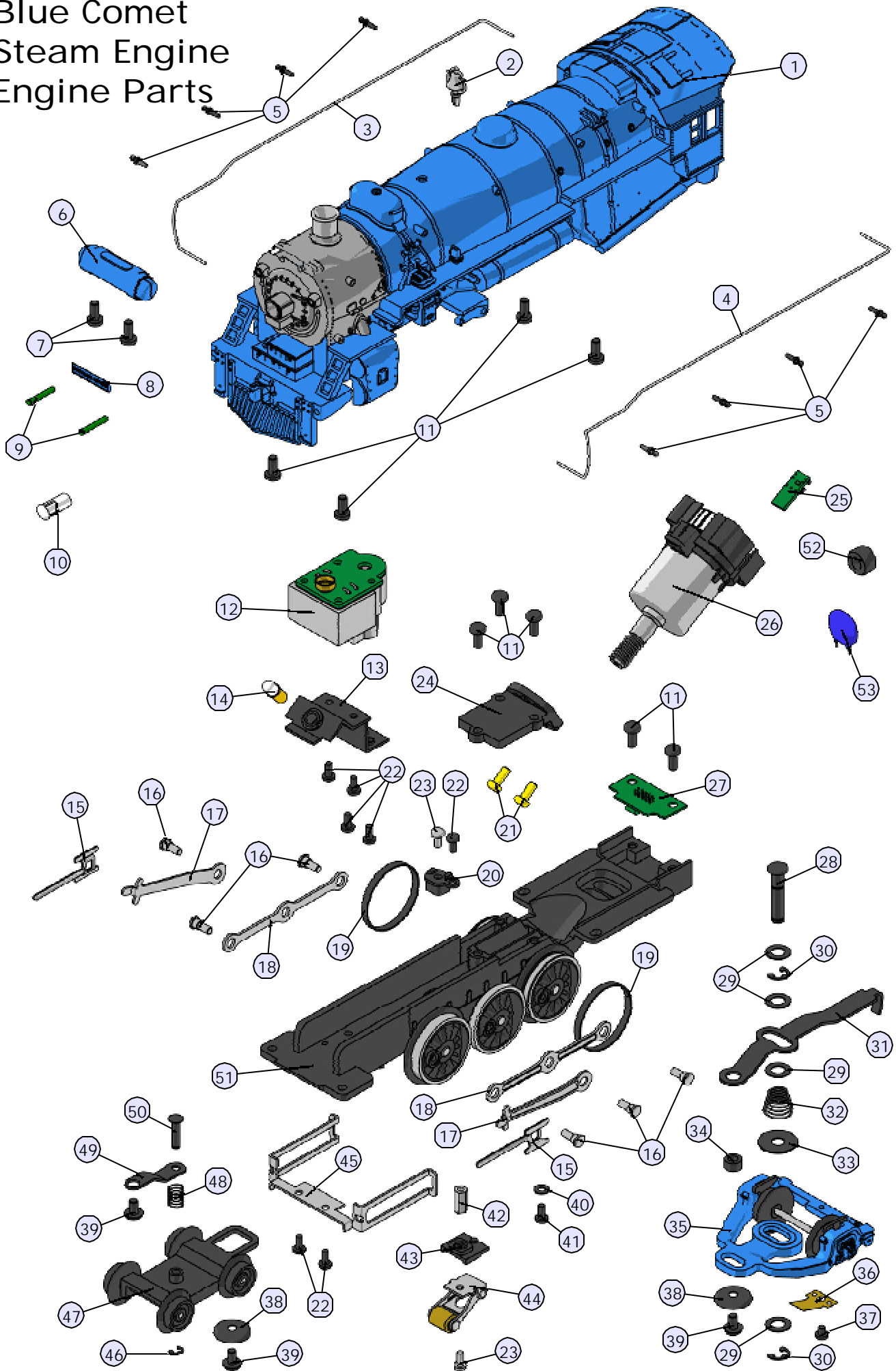
Blue Comet Steam Engine

Engine Parts

Name and Number	Part #	\$Price Per Unit	Name and Number	Part #	\$Price Per Unit
1.) Shell(blue,darkblue,graphite)(boiler)(metal)(TheBlueComet)(#831)	FB-1200260	*100.00	34.) Spacer(black)(5.7x8.8x5.0mm)(plastic)	ID-0000104	0.25
2.) Bell(nickel)	FB-1200101	6.00	35.) Truck(blue)(1axle)(trailing)(boiler)	DA-1240041	25.00
3.) Handrail(nickel)(right)(boiler)	FB-1210049	3.00	36.) Groundstrap(copper)	II-4500002	1.00
4.) Handrail(nickel)(left)(boiler)	FB-1220056	3.00	37.) Screw(4/40x4.0mm)(roundhead)	IA-0000021	0.15
5.) Stanchion (black)(plastic)(4.0mmlong)	FB-1200215	0.50	38.) Spacer(black)(3.5x15.0x2.5mm)(metal)(cupped)	ID-0000014	0.50
6.) Feedwaterheater(blue)(TheBlueComet)(#831)	FB-1200261	12.00	39.) Screw(6/32x6.0mm)(washerhead)	IA-0000214	0.15
7.) Screw(M2.5x8.0mm)(roundhead)	IA-0000184	0.15	40.) Washer(black)(3.0x6.0x0.4mm)(fiber)	ID-0000040	0.15
8.) Nameplate(blue,gold)(TheBlueComet)	FB-1200262	3.00	41.) Screw(6/32x4.0mm)(roundhead)	IA-0000060	0.15
9.) Lens(green)(2.2x8.0mm)(1.0x2.8mmlenshead)(markerlens)	FA-0000093	2.00	42.) Nut(nickel)(2.5x5.0x10.0mm)	IC-0000005	0.50
10.) Lens (clear)(headlight)(3.9x6.0x13.0mm)(7.0x2.1mm)(4ribsforpressfit)	FA-1230022	2.00	43.) Insulator(black)(pick-up)(bottom)(plastic)	BD-0000001	2.00
11.) Screw(6/32x8.0mm)(roundhead)	IA-0000050	0.15	44.) Pick-up(8.0x11.0mmlroller)(24.0mmlong)	BD-0000013	5.00
12.) Smokeunit(7.0x8.0x2.0x3.7mmbrasscup)(7.5mmlongposts)(Proto-Sound®2.0&Loco-Sound™)	AA-0000029	50.00	45.) Crossheadguideassembly(nickel)	EA-1200018	6.00
13.) Bracket(black)(headlight/smokeunit)(metal)(angled)	IH-0000262	3.00	46.) E-clip(2.5x6.0x0.5mm)	IF-0000004	0.15
14.) Bulb(clear)(headlight)(6v)(smallglobe)(screwbase)	CA-0000038	1.00	47.) Truck(blue)(lead)(2axle)(boiler)(34.8mmlwheelbase)	DA-1230032	20.00
15.) Crosshead(nickel)(38.8mmlong)	EC-1250016	5.00	48.) Spring(nickel)(6.5x9.0mm)(0.5mmlthickwire)	IE-0000009	0.50
16.) Bolt(nickel)(M3x8.0mm)(hexhead)	IA-0000087	1.00	49.) Bracket(black)(leadtruck)(7.0x31.5mm)(5.5mmlstep)	IH-1230010	1.00
17.) Driverod(nickel)(57.4mmlongw/bendinrod)	EC-1250030	3.00	50.) Pin(black)(3.0x15.0mm)(1.0x6.0mmlroundedhead)(1e-clipgroove0.5mmloutfromend)	IG-0000003	0.50
18.) Siderod(nickel)(70.0mmlong)(3boltholes)	EC-1250031	3.00	51.) Driveblock(blue)(3axle)	DF-1200039	*75.00
19.) Tractiontire(black)(rubber)	DE-0000023	0.75	52.) Ferritebead	AI-0000030	2.00
20.) Insulator(black)(top)(square)(pick-up)	BD-0000026	2.00	53.) Capacitor(blue)(.01uF)(16.0x2.0mm)(w/2wires)	AI-0000031	2.00
21.) Screw (yellowZinc)(M2.5x6.0mm)(roundheadw/lockwasher)	IA-0000089	0.15	NS.) Wireharness(w/female10pinPCboard)	BC-1200117	20.00
22.) Screw(4/40x6.0mm)(roundhead)	IA-0000003	0.15	NS.) Wireharness(redmale2pinplug)(80.0mmlongwires)	BC-1200113	3.00
23.) Screw(nickel)(M3x6.0mm)(roundhead)	IA-0000015	0.15	NS.) Wireharness(greenmale2pinplug)(75.0mmlongwires)	BC-1200114	3.00
24.) Motormount(black)	BI-0000034	15.00	NS.) Wireharness(blackmale2pinplug)(125.0mmlongwires)	BC-1200115	3.00
25.) Tachboard(w/tinyresister)(w/1.5mmlspacerbetweenboard&opticalsensor)	AG-0000054	6.00			
26.) Motor(RS-365SH)(8.0x21.0mm wormgear)(12.5mmlongthreads)(9.0x27.0mmwhiteflywheelw/blackstripes)(tachboard&wiremountingstrap)	BE-0000096	25.00			
27.) PCboard(green)(13.3x32.0mm)(2mountingholes)(blackfemale10pinplug)(horizontalmount)	AG-0000039	8.00			
28.) Pin(5.0x25.3mm)(1.5x8.0mmlflathead)(2e-clipgrooves)	IG-0000033	0.50			
29.) Washer(5.0x12.0x0.8mm)(metal)	ID-0000012	0.15			
30.) E-clip (3.5x9.0x0.6mm)	IF-0000009	0.15			
31.) Drawbar(black)(89.3mmlong)(5.0mmlstep&6.5mmlstep)	FB-1200263	3.00			
32.) Spring(nickel)(6.5x12.0x12.0mm)(0.6mmlthickwire)	IE-0000008	0.50			
33.) Washer(5.0x15.0x0.5mm)	ID-0000013	0.15			

*RequiresExchange
Allpartsarepricedaseach

Blue Comet Steam Engine Engine Parts



Blue Comet Steam Engine

Tender Parts

Name and Number	Part #	\$Price Per Unit	Name and Number	Part #	\$Price Per Unit
1.) Shell(blue,gold,black) (tender)(New Jersey Central)(plastic)	GA-1200104	*40.00	34.) Screw (4/40x4.0mm)(roundhead)	IA-0000021	0.15
2.) Screw (M3x6.0mm)(roundhead)	IA-0000016	0.15	35.) Drawbar(black) (12.1x67.3mm)(2mountingholes)	GA-1200105	3.00
3.) Speaker cone(black) (44.0x48.3x23.0mm)(2screw holes tabs)(plastic)	BF-0000016	5.00	NS.) Wireharness (black male 12 pin plug)	BC-1200119	12.00
4.) Speaker (Cuistack)(GF0501,8ohms,0.25watt)	BF-0000015	8.95			
5.) Gasket(black) (speaker ring)(43.8x49.8x3.0mm)(foam)	IB-0000009	0.50			
6.) Wireharness (black male 10 pin plug)	BC-1200118	15.00			
7.) Spacer(black) (3.0x6.0x4.0mm)(plastic)	ID-0000071	0.15			
8.) Volume pot(small)(blue)	BI-0000040	5.00			
9.) Screw (M3x8.0mm)(roundhead)	IA-0000035	0.15			
10.) Screw (M2x4.0mm)(roundhead)	IA-0000058	0.15			
11.) Switch(small)(SPDT)	BB-0000009	5.00			
12.) Wire nut(yellow)	BI-4500003	0.25			
13.) Screw (M3x4.0mm)(roundhead)	IA-0000010	0.15			
14.) Screw (4/40x6.0mm)(roundhead)	IA-0000003	0.15			
15.) Bracket(Aluminum) (vertical mounting)(for Loco-Sound™ board)	IH-0000265	4.00			
16.) Insulator(clear) (13.0x19.0x0.1mm)(single hole)	ID-0000024	0.15			
17.) Insulator washer(white) (6.0x4.0x2.5mm)(plastic)	ID-0000033	0.15			
18.) Board (Loco-Sound™)	AE-0000003	*100.00			
19.) Chassis (black)(tender) (has holes for battery charger jack) (for Loco-Sound™ tender)	GB-1200051	*15.00			
20.) Screw (M3x16.0mm)(washer head)(self-drilling threads)	IA-0000025	0.15			
21.) Screw(nickel) (M3x6.0mm)(roundhead)	IA-0000015	0.15			
22.) Insulator(black) (top)(square)(pick-up)	BD-0000026	2.00			
23.) Screw (6/32x6.0mm)(washer head)	IA-0000214	0.15			
24.) Truck(blue) (2 axle)(leading/trailing)(tender)	DA-1250014	25.00			
25.) T-bar (black) (4.0x20.0mm)(plastic)	IG-0000001	0.50			
26.) Coupler(black) (mechanical)(51.5mm long)	DD-0000039	3.00			
27.) Armature(black) (45.0mm long)	DD-0000040	1.00			
28.) Spring (6.5x11.0mm)(w/0.4mm thick wire)	IE-0000007	0.50			
29.) Washer(black)(plastic) (4.6x8.6x2.0mm)(inside 7.0x1.0mm)(cup shaped)	ID-0000060	0.15			
30.) E-clip(3.0x8.0x0.5mm)	IF-0000002	0.15			
31.) Nut(nickel) (2.5x5.0x7.0mm)	IC-0000008	0.50			
32.) Insulator(black) (pick-up)(bottom)(plastic)	BD-0000001	2.00			
33.) Pick-up (8.0x11.0mm roller)(24.0mm long)	BD-0000013	5.00			

*Requires Exchange
All parts are priced as each

Blue Comet Steam Engine Tender Parts

