



# **RK S/W-1 DIESEL ENGINE W/PROTO-SOUND® 3.0**

**30-20147-1**

**30-20148-1**

**30-20149-1**

**30-20150-1**

**30-20163-1**

## **PARTS LIST & EXPLODED VIEW**

REV. 07.2015

# PARTS LIST: BODY

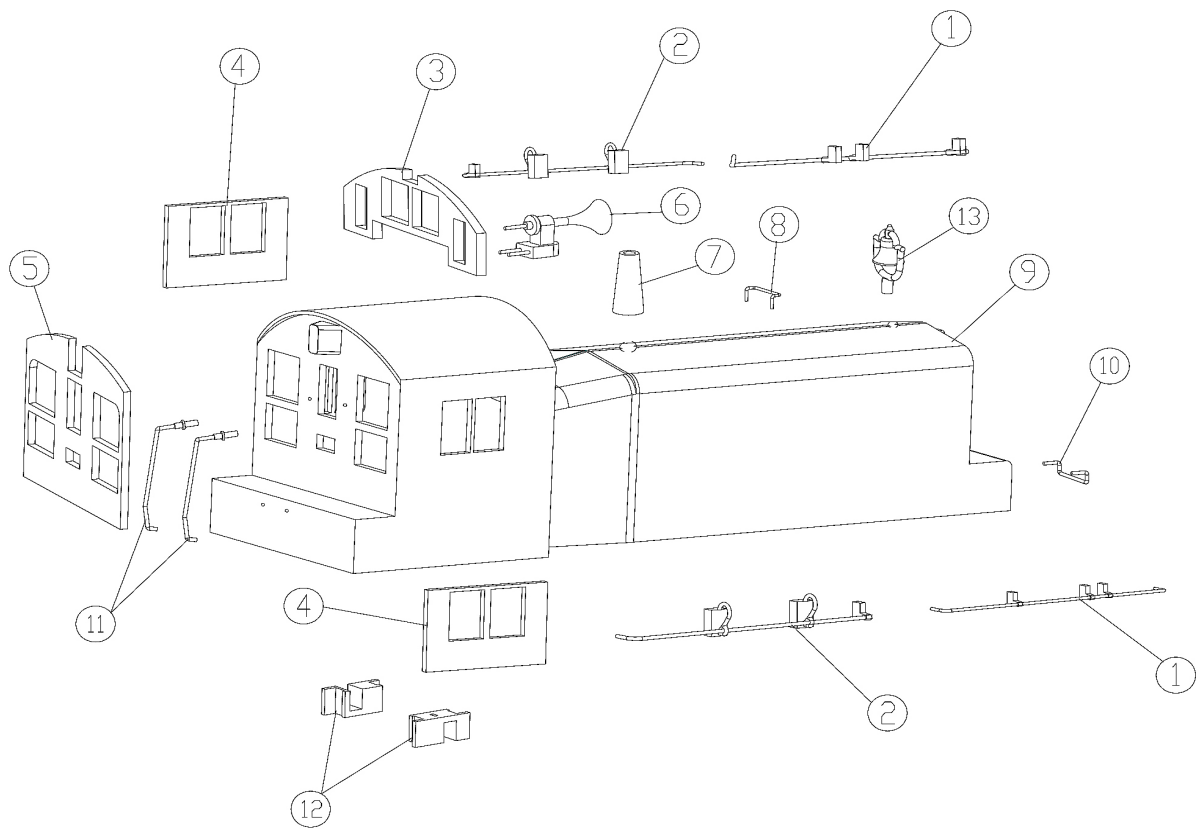


- |                                |                               |
|--------------------------------|-------------------------------|
| 1.) HANDRAIL ( A ),GREEN       | <a href="#">FC-2603001001</a> |
| HANDRAIL ( A ),YELLOW          | <a href="#">FC-2603001002</a> |
| HANDRAIL ( A ),BLACK           | <a href="#">FC-2603001003</a> |
| HANDRAIL ( A ),WHITE           | <a href="#">FC-2603001004</a> |
| 2.) HANDRAIL ( B ),GREEN       | <a href="#">FC-2603002001</a> |
| HANDRAIL ( B ),YELLOW          | <a href="#">FC-2603002002</a> |
| HANDRAIL ( B ),BLACK           | <a href="#">FC-2603002003</a> |
| HANDRAIL ( B ),WHITE           | <a href="#">FC-2603002004</a> |
| 3.) REAR WINDOW GLASS          | <a href="#">FB-2603003001</a> |
| 4.) SIDE WINDOW GLASS          | <a href="#">FB-2603004001</a> |
| 5.) FRONT WINDOW GLASS         | <a href="#">FB-2603005001</a> |
| 6.) HORN                       | <a href="#">BF-2603006001</a> |
| 7.) SMOKE STACK(A),GREEN       | <a href="#">AA-2603007001</a> |
| SMOKE STACK(A),YELLOW          | <a href="#">AA-2603007002</a> |
| SMOKE STACK(A),BLACK           | <a href="#">AA-2603007003</a> |
| SMOKE STACK(A),WHITE           | <a href="#">AA-2603007004</a> |
| 8.) HANDRAIL ( C ),GREEN       | <a href="#">FC-2603008001</a> |
| HANDRAIL ( C ),YELLOW          | <a href="#">FC-2603008002</a> |
| HANDRAIL ( C ),BLACK           | <a href="#">FC-2603008003</a> |
| HANDRAIL ( C ),WHITE           | <a href="#">FC-2603008004</a> |
| 9.) BODY(BOSTON & MAINE #1117) | <a href="#">FC-2603009001</a> |
| BODY(CHESSIE B&O #8408)        | <a href="#">FC-2603009002</a> |
| BODY(LEHIGH VALLEY #119)       | <a href="#">FC-2603009003</a> |
| BODY(NYC #672)                 | <a href="#">FC-2603009004</a> |
| BODY(PRR #9138)                | <a href="#">FC-2603009005</a> |
| BODY(AMTRAK #737)              | <a href="#">FC-2603009006</a> |
| BODY(READING #22)              | <a href="#">FC-2603009007</a> |
| BODY(SOUTHERN #404)            | <a href="#">FC-2603009008</a> |
| BODY(SOUTHERN PACIFIC #1008)   | <a href="#">FC-2603009009</a> |
| BODY(CNW #1273)                | <a href="#">FC-2603009010</a> |
| BODY(MILWAUKEE ROAD #1623)     | <a href="#">FC-2603009011</a> |
| BODY(N&W #2106)                | <a href="#">FC-2603009012</a> |
| BODY(SEABOARD #1200)           | <a href="#">FC-2603009013</a> |
| BODY(ROLLING ROCK #33)         | <a href="#">FC-2603009014</a> |
| BODY(JCL #1010)                | <a href="#">FC-2603009015</a> |
| BODY(ROCK ISLAND #4801)        | <a href="#">FC-2603009016</a> |
| BODY(C & O #8401)              | <a href="#">FC-2603009017</a> |
| BODY(GN #76)                   | <a href="#">FC-2603009018</a> |
| BODY(NS #2105)                 | <a href="#">FC-2603009019</a> |
| BODY(AMTRAK #735)              | <a href="#">FC-2603009020</a> |
| BODY(BURLINGTON #9140)         | <a href="#">FC-2603009021</a> |
| BODY(CHESSIS C&O #8401)        | <a href="#">FC-2603009022</a> |
| 10.) HANDRAIL ( D ),GREEN      | <a href="#">FC-2603010001</a> |
| HANDRAIL ( D ),YELLOW          | <a href="#">FC-2603010002</a> |
| HANDRAIL ( D ),BLACK           | <a href="#">FC-2603010003</a> |
| HANDRAIL ( D ),WHITE           | <a href="#">FC-2603010004</a> |
| 11.) HANDRAIL ( E ),GREEN      | <a href="#">FC-2601011001</a> |
| HANDRAIL ( E ),YELLOW          | <a href="#">FC-2601011002</a> |
| HANDRAIL ( E ),BLACK           | <a href="#">FC-2601011003</a> |
| HANDRAIL ( E ),WHITE           | <a href="#">FC-2601011004</a> |
| 12.) BASE(FIRE MAN)            | <a href="#">FI-2603012001</a> |
| 13.) BELL                      | <a href="#">FC-2603042001</a> |

# EXPLODED VIEW: BODY



RK S/W-1 Diesel Engine  
Body parts



# PARTS LIST: CHASSIS



- 1.) RUBBER BAND [BI-4500004](#)
- 2.) MOTOR(WITH FLYWHEEL STRIPES, TACH BRACKET) [BE-2603013001](#)
- 3.) MOTER MOUNT [BI-2603014001](#)
- 4.) SCREW(M2.5X6.0MM W/LOCK WASHER) [IA-0000089](#)
- 5.) TACH BOARD [AG-0000102](#)
- 6.) PS3 DIESEL/ELECTRIC BOARD [AE-1000034](#)
- 7.) BRACKET (PLASTIC PS3) [IH-0000472](#)
- 8.) SUPPORT [IH-2603015001](#)
- 9.) PS3.0 PCB HEATSINK [IC-0000028](#)
- 10.) SCREW(D2.6X3.0MM,BLACK)
- 11.) SCREW(4/40X4.0MM,ROUNDHEAD,BLACK) [IA-0000021](#)
- 12.) MOTOR(WITH BLACK FLYWHEEL) [BE-2603017001](#)
- 13.) REAR HAND ASSEMBLY,BLACK AND WHITE [FC-2603018001](#)  
REAR HAND ASSEMBLY,SIGNAL YELLOW [FC-2603018002](#)  
REAR HAND ASSEMBLY,GREEN AND SIGNAL YELLOW [FC-2603018003](#)
- 14.) FRONT REAR HAND POST,WHITE AND BLACK [FC-2603019001](#)  
FRONT REAR HAND POST,SIGNAL YELLOW [FC-2603019002](#)  
FRONT REAR HAND POST,GREEN AND SIGNAL YELLOW [FC-2603019003](#)
- 15.) FRONT REAR HAND RAIL,BLACK AND WHITE [FC-2603020001](#)  
FRONT REAR HAND RAIL,SIGNAL YELLOW [FC-2603020002](#)  
FRONT REAR HAND RAIL,GREEN AND SIGNAL YELLOW [FC-2603020003](#)
- 16.) FLOOR [DH-2603021001](#)
- 17.) SCREW(M2.6X6.0MM W/LOCK WASHER) [IA-0000089](#)
- 18.) SPEAKER COVER [BF-2603022001](#)
- 19.) SPEAKER(40 MM DIA., 4Ω, 4 WATT) [BF-0000047](#)
- 20.) FUEL TANK,BLACK [FC-2603024001](#)
- 21.) SCREW(M3.0X6.0MM,F,BLACK) [IA-0000073](#)
- 22.) T-BAR [IG-0000001](#)
- 23.) PROTO-COUPLER(SHORT,44MM) [DD-0000033](#)
- 24.) SPRING [IE-0000007](#)
- 25.) WASHER [ID-0000026](#)
- 26.) E-RING [IF-0000002](#)
- 27.) PILOT,GREEN [DG-2603030001](#)  
PILOT, BLACK WITH WHITE STRIPES [DG-2603030002](#)  
PILOT, BLACK WITH ORANGE STRIPES [DG-2603030003](#)
- 28.) TRUCK SIDE FRAME-L (BLACK) [DB-2623031001](#)
- 29.) TRUCK SIDE FRAME-R (BLACK) [DB-2613032001](#)
- 30.) TRUCK (POWER, 4 WHEEL) [EG-2603033001](#)
- 31.) SCREW(M3.0X6.0MM,BLACK) [IA-0000016](#)
- 32.) PICK UP [BD-0000097](#)
- 33.) SCREW(M3.0X7.0MM,NI) [IA-0000015](#)
- 34.) TRACTION TIRE [DE-0000018](#)
- 35.) INSULATOR (PICK-UP, BOTTOM) [IC-0000008](#)
- 36.) SCREW, MOTOR MOUNT (M3.0 X 12 MM W/LOCK WASHER) [IA-0000012](#)
- 37.) VOLUME POT [BI-0000040](#)
- 38.) BRACKET(VOLUME POT) [IH-2603040001](#)
- 39.) SWITCH (DCC/DCS) [BB-0000002](#)
- 40.) INSULATOR [BD-0000104](#)

# EXPLODED VIEW: CHASSIS



RK S/W-1 Diesel Engine

Chassis parts

