



# **RK SW-1 DIESEL ENGINE W/PROTO-SOUND® 2.0**

|                  |                  |                  |                  |
|------------------|------------------|------------------|------------------|
| <b>30-2922-1</b> | <b>30-2743-1</b> | <b>30-2746-1</b> | <b>30-2822-1</b> |
| <b>30-2923-1</b> | <b>30-2900-1</b> | <b>30-2919-1</b> | <b>30-2965-1</b> |
| <b>30-2934-1</b> | <b>30-2744-1</b> | <b>30-2820-1</b> | <b>30-2823-1</b> |
| <b>30-2925-1</b> | <b>30-2901-1</b> | <b>30-2963-1</b> | <b>30-2966-1</b> |
| <b>30-2742-1</b> | <b>30-2745-1</b> | <b>30-2821-1</b> |                  |
| <b>30-2899-1</b> | <b>30-2902-1</b> | <b>30-2964-1</b> |                  |

## **PARTS LIST & EXPLODED VIEW**

REV. 07.2015

# PARTS LIST: BODY



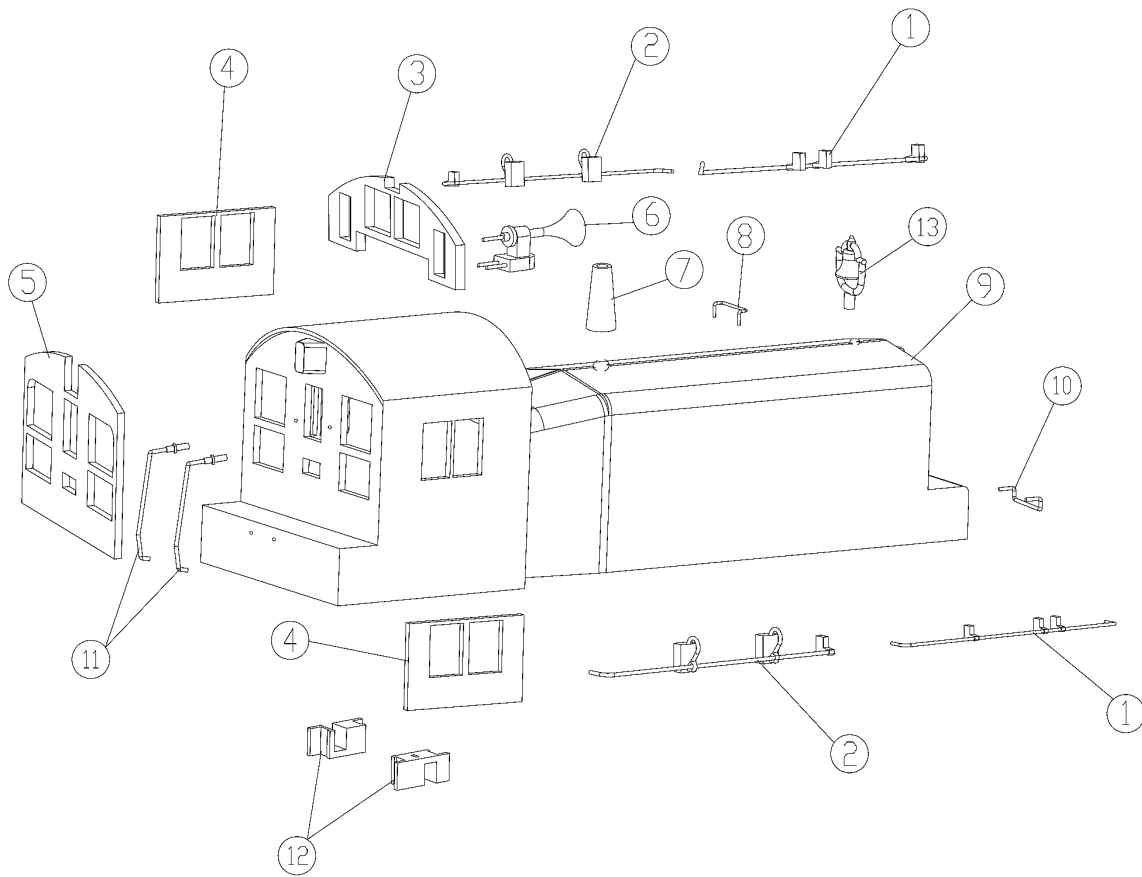
- |                                |                               |
|--------------------------------|-------------------------------|
| 1.) HANDRAIL ( A ),GREEN       | <a href="#">FC-2603001001</a> |
| HANDRAIL ( A ),YELLOW          | <a href="#">FC-2603001002</a> |
| HANDRAIL ( A ),BLACK           | <a href="#">FC-2603001003</a> |
| HANDRAIL ( A ),WHITE           | <a href="#">FC-2603001004</a> |
| 2.) HANDRAIL ( B ),GREEN       | <a href="#">FC-2603002001</a> |
| HANDRAIL ( B ),YELLOW          | <a href="#">FC-2603002002</a> |
| HANDRAIL ( B ),BLACK           | <a href="#">FC-2603002003</a> |
| HANDRAIL ( B ),WHITE           | <a href="#">FC-2603002004</a> |
| 3.) REAR WINDOW GLASS          | <a href="#">FB-2603003001</a> |
| 4.) SIDE WINDOW GLASS          | <a href="#">FB-2603004001</a> |
| 5.) FRONT WINDOW GLASS         | <a href="#">FB-2603005001</a> |
| 6.) HORN                       | <a href="#">BF-2603006001</a> |
| 7.) SMOKE STACK(A),GREEN       | <a href="#">AA-2603007001</a> |
| SMOKE STACK(A),YELLOW          | <a href="#">AA-2603007002</a> |
| SMOKE STACK(A),BLACK           | <a href="#">AA-2603007003</a> |
| SMOKE STACK(A),WHITE           | <a href="#">AA-2603007004</a> |
| 8.) HANDRAIL ( C ),GREEN       | <a href="#">FC-2603008001</a> |
| HANDRAIL ( C ),YELLOW          | <a href="#">FC-2603008002</a> |
| HANDRAIL ( C ),BLACK           | <a href="#">FC-2603008003</a> |
| HANDRAIL ( C ),WHITE           | <a href="#">FC-2603008004</a> |
| 9.) BODY(BOSTON & MAINE #1117) | <a href="#">FC-2603009001</a> |
| BODY(CHESSIE B&O #8408)        | <a href="#">FC-2603009002</a> |
| BODY(LEHIGH VALLEY #119)       | <a href="#">FC-2603009003</a> |
| BODY(NYC #672)                 | <a href="#">FC-2603009004</a> |
| BODY(PRR #9138)                | <a href="#">FC-2603009005</a> |
| BODY(AMTRAK #737)              | <a href="#">FC-2603009006</a> |
| BODY(READING #22)              | <a href="#">FC-2603009007</a> |
| BODY(SOUTHERN #404)            | <a href="#">FC-2603009008</a> |
| BODY(SOUTHERN PACIFIC #1008)   | <a href="#">FC-2603009009</a> |
| BODY(CNW #1273)                | <a href="#">FC-2603009010</a> |
| BODY(MILWAUKEE ROAD #1623)     | <a href="#">FC-2603009011</a> |
| BODY(N&W #2106)                | <a href="#">FC-2603009012</a> |
| BODY(SEABOARD #1200)           | <a href="#">FC-2603009013</a> |
| BODY(ROLLING ROCK #33)         | <a href="#">FC-2603009014</a> |
| BODY(JCL #1010)                | <a href="#">FC-2603009015</a> |
| BODY(ROCK ISLAND #4801)        | <a href="#">FC-2603009016</a> |
| BODY(C & O #8401)              | <a href="#">FC-2603009017</a> |
| BODY(GN #76)                   | <a href="#">FC-2603009018</a> |
| BODY(NS #2105)                 | <a href="#">FC-2603009019</a> |
| BODY(AMTRAK #735)              | <a href="#">FC-2603009020</a> |
| BODY(BURLINGTON #9140)         | <a href="#">FC-2603009021</a> |
| BODY(CHESSIS C&O #8401)        | <a href="#">FC-2603009022</a> |
| 10.) HANDRAIL ( D ),GREEN      | <a href="#">FC-2603010001</a> |
| HANDRAIL ( D ),YELLOW          | <a href="#">FC-2603010002</a> |
| HANDRAIL ( D ),BLACK           | <a href="#">FC-2603010003</a> |
| HANDRAIL ( D ),WHITE           | <a href="#">FC-2603010004</a> |
| 11.) HANDRAIL ( E ),GREEN      | <a href="#">FC-2601011001</a> |
| HANDRAIL ( E ),YELLOW          | <a href="#">FC-2601011002</a> |
| HANDRAIL ( E ),BLACK           | <a href="#">FC-2601011003</a> |
| HANDRAIL ( E ),WHITE           | <a href="#">FC-2601011004</a> |
| 12.) BASE(FIRE MAN)            | <a href="#">FI-2603012001</a> |
| 13.) BELL                      | <a href="#">FC-2603042001</a> |

# EXPLODED VIEW: BODY



RK S/W-1 Diesel Engine

Body parts



# PARTS LIST: CHASSIS



- |   |                               |
|---|-------------------------------|
| 1.) RUBBER BAND   | <a href="#">BI-4500004</a>    |
| 2.) MOTOR<br>(WITH FLYWHEEL STRIPES, TACH BRACKET)      | <a href="#">BE-2603013001</a> |
| 3.) MOTER MOUNT   | <a href="#">BI-2603014001</a> |
| 4.) SCREW(M2.6X6.0MM W/LOCK WASHER)                     | <a href="#">IA-0000089</a>    |
| 5.) TACH BOARD  | <a href="#">AG-0000033</a>    |
| 6.) SCREW(M3.0X6.0MM,F,BLACK)                           | <a href="#">IA-0000073</a>    |
| 7.) BOARD (PS2 3VOLT POWER)                             | <a href="#">AE-0000011</a>    |
| 8.) BOARD (PS2 3VOLT PROCESSOR)                         | <a href="#">AE-0000010</a>    |
| 9.) BRACKET (PLASTIC PS2 3VOLT)                         | <a href="#">IH-0000391</a>    |
| 10.) SCREW(D2.6X3.0MM,BLACK)                            |                               |
| 11.) HEAT SINK  | <a href="#">IH-2603016001</a> |
| 12.) MOTOR(WITH BLACK FLYWHEEL)                         | <a href="#">BE-2603017001</a> |
| 13.) REAR HAND ASSEMBLY,BLACK AND WHITE                 | <a href="#">FC-2603018001</a> |
| REAR HAND ASSEMBLY,SIGNAL YELLOW                        | <a href="#">FC-2603018002</a> |
| REAR HAND ASSEMBLY,GREEN<br>AND SIGNAL YELLOW           | <a href="#">FC-2603018003</a> |
| 14.) FRONT REAR HAND POST,WHITE AND BLACK               | <a href="#">FC-2603019001</a> |
| FRONT REAR HAND POST,SIGNAL YELLOW                      | <a href="#">FC-2603019002</a> |
| FRONT REAR HAND POST,GREEN<br>AND SIGNAL YELLOW         | <a href="#">FC-2603019003</a> |
| 15.) FRONT REAR HAND RAIL,BLACK AND WHITE               | <a href="#">FC-2603020001</a> |
| FRONT REAR HAND RAIL,SIGNAL YELLOW                      | <a href="#">FC-2603020002</a> |
| FRONT REAR HAND RAIL,GREEN<br>AND SIGNAL YELLOW         | <a href="#">FC-2603020003</a> |
| 16.) FLOOR  | <a href="#">DH-2603021001</a> |
| 17.) SCREW(M2.6X6.0MM W/LOCK WASHER)                    | <a href="#">IA-0000089</a>    |
| 18.) SPEAKER COVER                                      | <a href="#">BF-2603022001</a> |
| 19.) SPEAKER(40 MM DIA., 4Ω, 4 WATT)                    | <a href="#">BF-0000047</a>    |
| 20.) FUEL TANK,BLACK                                    | <a href="#">FC-2603024001</a> |
| 21.) SCREW(M3.0X6.0MM,F,BLACK)                          | <a href="#">IA-0000073</a>    |
| 22.) T-BAR  | <a href="#">IG-0000001</a>    |
| 23.) PROTO-COUPLER(SHORT,44MM)                          | <a href="#">DD-0000033</a>    |
| 24.) SPRING   | <a href="#">IE-0000007</a>    |
| 25.) WASHER   | <a href="#">ID-0000026</a>    |
| 26.) E-RING   | <a href="#">IF-0000002</a>    |
| 27.) PILOT,GREEN  | <a href="#">DG-2603030001</a> |
| PILOT, BLACK WITH WHITE STRIPES                         | <a href="#">DG-2603030002</a> |
| PILOT, BLACK WITH ORANGE STRIPES                        | <a href="#">DG-2603030003</a> |
| 28.) TRUCK SIDE FRAME-L (BLACK)                         | <a href="#">DB-2623031001</a> |
| 29.) TRUCK SIDE FRAME-R (BLACK)                         | <a href="#">DB-2613032001</a> |
| 30.) TRUCK (POWER, 4 WHEEL)                             | <a href="#">EG-2603033001</a> |
| 31.) SCREW(M3.0X6.0MM,BLACK)                            | <a href="#">IA-0000016</a>    |
| 32.) PICK UP BD-0000097                                 |                               |
| 33.) SCREW(M3.0X7.0MM,NI)                               | <a href="#">IA-0000015</a>    |
| 34.) TRACTION TIRE                                      | <a href="#">DE-0000018</a>    |
| 35.) INSULATOR (PICK-UP, BOTTOM)                        | <a href="#">IC-0000008</a>    |
| 36.) SCREW, MOTOR MOUNT<br>(M3.0 X 12 MM W/LOCK WASHER) | <a href="#">IA-0000012</a>    |
| 37.) VOLUME POT   | <a href="#">BI-0000040</a>    |
| 38.) BRACKET(VOLUME POT)                                | <a href="#">IH-2603040001</a> |
| 39.) SCREW(4/40X4.0MM,ROUNDHEAD,BLACK)                  | <a href="#">IA-0000021</a>    |
| 40.) INSULATOR  | <a href="#">BD-0000104</a>    |

# EXPLODED VIEW: CHASSIS



RK S/W-1 Diesel Engine

Chassis parts

