



20-3029-1

# GS-4 4-8-4



REV.020101

# GS-4 4-8-4 Steam Engine

## Boiler Parts

Name and Number	Part #	\$Price Per Unit	Name and Number	Part #	\$Price Per Unit
1.) Handrail ( nickel ) ( top of cab )( 41.2mm long )	FB-1150001	2.00	37.) Boiler front ( silver )	FB-1130001	*25.00
2.) Cab ( black, red, orange ) ( Southern Pacific Daylight )( #4449 )	FB-1100001	*30.00	38.) Lens ( clear ) ( headlight and number board )( #4449 )	FA-1130001	5.00
3.) Handrail ( nickel ) ( left )( cab )( 54.5mm long )	FB-1120001	2.00	39.) Lens ( clear )( mars light )	FA-1130002	3.00
4.) Handrail ( nickel ) ( right )( cab )( 54.5mm long )	FB-1110001	2.00	40.) Trust plate	FB-1150005	3.00
5.) Ladder ( silver )	FB-1100002	10.00	41.) Builder's plate	FB-1150006	3.00
6.) Screw ( 6/32x6.0mm )( roundhead )	IA-0000027	0.15	42.) Super heat plate	FB-1110009	3.00
7.) Step ( black )	FB-1100003	3.00	43.) Panel ( black )( right )	FB-1110006	8.00
8.) Step ( red )	FB-1100004	3.00	44.) Panel ( black )( left )	FB-1120006	8.00
9.) Screw ( 6/32x4.0mm )( roundhead )	IA-0000060	0.15	45.) Screw ( 4/40x4.0mm )( roundhead )	IA-0000021	0.15
10.) Grommet ( black ) ( 4.5x5.0mm )( rubber )	IH-0000010	0.15	46.) Stanchion ( silver )	FB-1100013	2.00
11.) Boiler ( black, red, gray ) ( Southern Pacific Daylight )( #4449 )	FB-1100005	*100.00	47.) Handrail ( nickel ) ( mounts on boiler front )	FB-1130002	2.00
12.) Steam generator ( black )	FB-1100006	6.00	48.) Smoke unit	AA-0000008	50.00
13.) Pop-off valves ( brass )	FB-1100007	8.00	49.) Smoke wick ( white )	AA-0000001	1.00
14.) Handrail ( nickel ) ( boiler )( 315.0mm long )	FB-1150002	4.00	50.) Bracket ( black ) ( smoke unit )( 8.0x38.0mm )	IH-0000049	2.00
15.) Number board ( # X4449 )( right )	FG-1110001	2.00	51.) Screw ( 4/40x4.0mm )( roundhead )	IA-0000021	0.15
16.) Number board ( # X4449 )( left )	FG-1120001	2.00	52.) Screw ( 4/40x6.0mm )( roundhead )	IA-0000003	0.15
17.) Number board housing ( black )( right )	FB-1110002	8.00	53.) Number board ( silver & red ) ( #4449 )( w/ base )	FB-1130003	5.00
18.) Number board housing ( black )( left )	FB-1120002	8.00	54.) Grill housing ( silver )	FB-1130004	5.00
19.) Bulbs ( clear )( 6v )( 2 ) ( grain of wheat )( 65.0mm long wires w/ black plug )	CC-0000004	3.00	55.) Grill ( silver )	FB-1130005	2.00
20.) Side panel ( orange ) ( right )( Southern Pacific Daylight )	FB-1110003	*15.00	56.) Screw ( 4/40x6.0mm )( roundhead )	IA-0000003	0.15
21.) Side panel ( orange ) ( left )( Southern Pacific Daylight )	FB-1120003	*15.00	57.) Step ( orange )( right )	FB-1110007	6.00
22.) Check valve ( red ) ( right )	FB-1110004	6.00	58.) Step ( orange )( left )	FB-1120007	6.00
23.) Check valve ( red ) ( left )	FB-1120004	6.00	59.) Uncoupling lever ( nickel )	FB-1130006	4.00
24.) Stanchion ( black )	FB-1100008	2.00	60.) Bolt ( black ) ( M2.5x6.0mm )( slotted head )( w/undersized shank )	IA-0000061	0.15
25.) Stanchion ( black ) ( whistle linkage )	FB-1100009	2.00	61.) Screw ( 4/40x6.0mm )( roundhead )	IA-0000003	0.15
26.) Whistle linkage ( black & gray )	FB-1100010	10.00	62.) Coupler ( black )( scale )	DD-0000005	6.00
27.) Whistle ( brass )	FB-1100011	5.00	63.) Coupler ( black ) ( non-operating )	DD-0000006	6.00
28.) Marker light housing ( silver )( right )	FB-1110005	6.00	64.) Stanchion ( nickel ) ( for uncoupling lever )	FB-1130007	2.00
29.) Marker light housing ( silver )( left )	FB-1120005	6.00	65.) Stanchion ( silver ) ( uncoupling lever )( center )	FB-1130008	2.00
30.) Stanchion ( gray )( handrail )	FB-1150003	2.00	66.) Screw ( 6/32x8.0mm )( roundhead )	IA-0000050	0.15
31.) Handrail ( nickel ) ( boiler )( 12.0mm long )	FB-1150004	1.00	67.) Pilot ( orange w/silver stripes )	FB-1130009	20.00
32.) L.E.D.'s ( red ) ( 6v )( 60.0mm long wires w/ yellow plug )	CE-0000013	3.00	68.) Frame ( black )	FB-1100014	*40.00
33.) Bulb ( clear )( headlight ) ( 6v )( 60.0mm long wires w/ blue plug )( grain of wheat )	CA-0000028	2.00	69.) Screw ( 4/40x6.0mm )( roundhead )	IA-0000003	0.15
34.) Bulbs ( clear )( mars light ) ( 6v )( 60.0mm long wires w/ white plug )( grain of wheat )	CB-0000004	4.00	70.) Flashing light board	AG-0000008	15.00
35.) Screw ( M2x8.0mm )( w/4.0mm long shank )	IA-0000059	0.15	71.) CV board	AG-0000009	30.00
36.) Horn ( brass )	FB-1100012	3.00	72.) Bracket ( black ) ( CV board )( 10.0x58.0mm )	IH-0000050	2.00
			73.) Screw ( 6/32x6.0mm )( roundhead )	IA-0000027	0.15
			74.) Screw ( 6/32x6.0mm )( roundhead )	IA-0000027	0.15
			75.) Screw ( 4/40x4.0mm )( roundhead )	IA-0000021	0.15
			76.) Bracket ( black ) ( for mounting compressor )	IH-0000051	2.00

\*Requires Exchange  
All parts are priced as each



# GS-4 4-8-4 Steam Engine

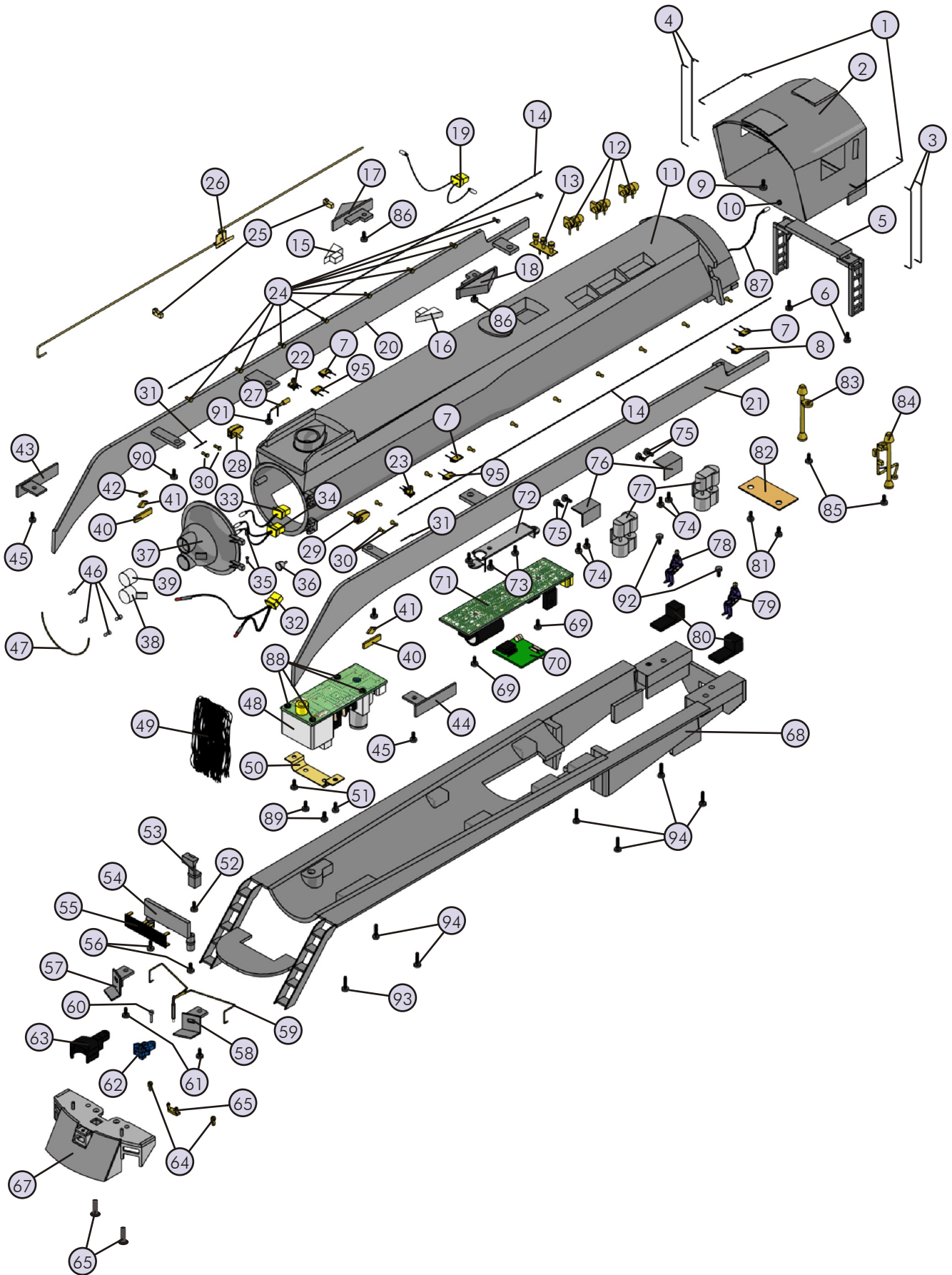
## Boiler Parts

Name and Number	Part #	\$Price Per Unit
77.) Compressor ( black )	FB-1100015	12.00
78.) Engineer ( white man )	FI-0000001	5.00
79.) Fireman ( white man )	FI-0000009	5.00
80.) Stand ( black ) ( engineer/fireman )	FI-0000010	1.00
81.) Screw ( 4/40x6.0mm )( roundhead )	IA-0000003	0.15
82.) Contact spring board	BH-0000009	2.00
83.) Injector ( black )( right )( single pipe )	FB-1110008	6.00
84.) Injector ( black )( left )( 2 pipes )	FB-1120008	6.00
85.) Screw ( 4/40x6.0mm )( roundhead )	IA-0000003	0.15
86.) Screw ( 4/40x4.0mm )( roundhead )	IA-0000021	0.15
87.) Bulb ( clear )( 6v ) ( grain of wheat )( 215.0mm long wires )	CG-0000004	2.00
88.) Screw ( 4/40x6.0mm )( roundhead )	IA-0000003	0.15
89.) Screw ( 4/40x6.0mm )( roundhead )	IA-0000003	0.15
90.) Screw ( 4/40x6.0mm )( roundhead )	IA-0000003	0.15
91.) Screw ( 6/32x6.0mm )( roundhead )	IA-0000027	0.15
92.) Screw ( 4/40x6.0mm )( roundhead )	IA-0000003	0.15
93.) Screw ( 6/32x12.0mm )( roundhead )	IA-0000062	0.15
94.) Screw ( 6/32x10.0mm )( roundhead )	IA-0000040	0.15
95.) Step ( black )	FB-1100155	3.00

\*Requires Exchange  
All parts are priced as each



# GS-4 4-8-4 Steam Engine



# GS-4 4-8-4 Steam Engine

## Drive Block Parts

Name and Number	Part #	\$Price Per Unit	Name and Number	Part #	\$Price Per Unit
95.) Motor ( Pittman )( 9434J434-R1 )	BE-0000030	50.00	128.)Eccentric rod guide ( black ) ( right )	ED-1110002	3.00
96.) Motor mount ( black ) ( for Pittman motors )	BI-0000021	10.00	129.) Screw ( 6/32x8.0mm )( roundhead )	IA-0000050	0.15
97.) Screw ( 8/32x7.0mm )( roundhead )	IA-0000063	0.15	130.)Eccentric rod guide ( black ) ( left )	ED-1120002	3.00
98.) Screw ( 6/32x8.0mm )( roundhead )	IA-0000050	0.15	131.)Sleeve ( nickel ) ( outer )( 7.0x3.0x10.0mm )	ID-0000036	1.00
99.) Flywheel ( brass ) ( for Pittman motors )( 13.0x32.0mm )	BE-0000031	5.00	132.)Sleeve ( nickel ) ( inner )( 6.0x6.0x7.0mm )	ID-0000037	1.00
100.)Drive shaft ( black ) ( plastic )( 34.7mm long )	EH-0000004	3.00	133.)Drive rod ( nickel ) ( left )( complete )	EC-1120001	10.00
101.)Screw ( 4/40x8.0mm )( roundhead )	IA-0000011	0.15	134.)Brake shoe assembly ( black )( long )( right )	FB-1110012	3.00
102.)Gear box cover ( black ) ( 19.3x36.3x1.0mm )( metal )	BI-0000022	2.00	135.)Screw ( 4/40x6.0mm )( roundhead )	IA-0000003	0.15
103.)Gasket ( black ) ( for gear box cover )( 19.2x36.0x1.6mm )( fiber )	BI-0000023	1.00	136.)Screw ( nickel ) ( 6/32x6.0mm )( roundhead )	IA-0000051	0.15
104.)Bearing ( nickel ) ( 4.0x9.0x4.0mm )	DC-0000001	5.00	137.)Drive rod guide ( nickel ) ( left )( 40.0mm long )	EA-1120001	3.00
105.)Worm gear ( 53.7mm long )	EH-0000005	10.00	138.)Drive rod guide ( nickel ) ( right )( 40.0mm long )	EA-1110001	3.00
106.)Blow down muffler ( black )( right )	FB-1110010	10.00	139.)Steam chest ( black )	EF-1130001	25.00
107.)Screw ( 4/40x6.0mm )( roundhead )	IA-0000003	0.15	140.)Screw ( 4/40x6.0mm )( roundhead )	IA-0000003	0.15
108.)Blow down muffler ( black )( left )	FB-1120009	10.00	141.)Brake assembly ( black ) ( lead truck )	FB-1100016	6.00
109.)Screw ( 6/32x6.0mm )( roundhead )	IA-0000027	0.15	142.)Bracket ( black )( lead truck )	IH-0000052	1.00
110.)PCB ( 4 pin female plug w/ springs )( 14.5x32.0mm )	BB-0000012	8.00	143.)Truck ( black ) ( lead )( 2 axle )( boiler )	DA-1130002	25.00
111.)Screw ( M2x4.0mm )( roundhead )	IA-0000058	0.15	144.) E-clip ( 3.5x9.0x0.6mm )	IF-0000009	0.15
112.)Switch ( large )	BB-0000010	5.00	145.)Screw ( 6/32x6.0mm )( washer head )	IA-0000214	0.15
113.)Insulator ( black ) ( top )( square )( pick-up )	BD-0000026	2.00	146.) Spacer ( black ) ( 3.5x15.0x2.5mm )( metal )	ID-0000014	0.50
114.)Screw ( 4/40x6.0mm )( roundhead )	IA-0000003	0.15	147.)Screw ( 6/32x6.0mm )( washer head )	IA-0000214	0.15
115.) Screw ( nickel ) ( M3x6.0mm )( roundhead )	IA-0000015	0.15	148.)Washer ( 5.0x8.0x0.5mm )	ID-0000038	0.15
116.)Traction tire	DE-0000031	0.75	149.)Spring ( nickel ) ( 6.5x12.0mm )( 0.6mm thick wire )	IE-0000024	0.50
117.)Brake shoe assembly ( black )( short )( right )	FB-1110011	3.00	150.)Pin ( black ) ( 1 e-clip groove )( 5.0x16.0mm )	IG-0000008	0.50
118.)Bolt ( nickel ) ( M2.5x7.5mm )( hex head )	IA-0000106	1.00	151.)Screw ( 4/40x4.0mm )( roundhead )	IA-0000021	0.15
119.)Bolt ( nickel ) ( M2.5x13.5mm )( hex head )	IA-0000065	1.00	152.)Screw ( 4/40x6.0mm )( roundhead )	IA-0000003	0.15
120.)Side rod ( nickel ) ( 145.0mm long )( 4 bolt holes )	EC-1150001	4.00	153.)Insulator ( black ) ( pick-up )( bottom )( flat )( square )	BD-0000024	2.00
121.)Screw ( M2x8.0mm )( w/4.0mm long shank )( roundhead )	IA-0000059	0.15	154.)Pick-up ( 8.0x11.0mm roller )( 28.0mm long )	BD-0000038	5.00
122.)Screw ( 6/32x10.0mm )( roundhead )	IA-0000040	0.15	155.)Screw ( nickel ) ( M3x6.0mm )( roundhead )	IA-0000015	0.15
123.)Motion hanger ( black )	EA-1100001	10.00	156.)Screw ( 6/32x6.0mm )( washer head )	IA-0000214	0.15
124.)Eccentric assembly ( nickel ) ( right )( 43.2mm long rod )	ED-1110001	5.00	157.)Nut ( 2.5x5.0x10.0mm )	IC-0000005	0.50
125.)Eccentric assembly ( nickel ) ( left )( 43.2mm long rod )	ED-1120001	5.00	158.)Brake shoe assembly ( black )( long )( left )	FB-1120010	3.00
126.)Drive rod ( nickel ) ( right )( complete )	EC-1110001	10.00	159.)Brake shoe assembly ( black )( short )( left )	FB-1120011	3.00
127.)Screw ( 6/32x10.0mm )( roundhead )	IA-0000040	0.15	160.)Pin ( black ) ( 2 e-clip grooves )( 5.0x18.5mm )	IG-0000009	0.50

\*Requires Exchange

All parts are priced as each



# GS-4 4-8-4 Steam Engine

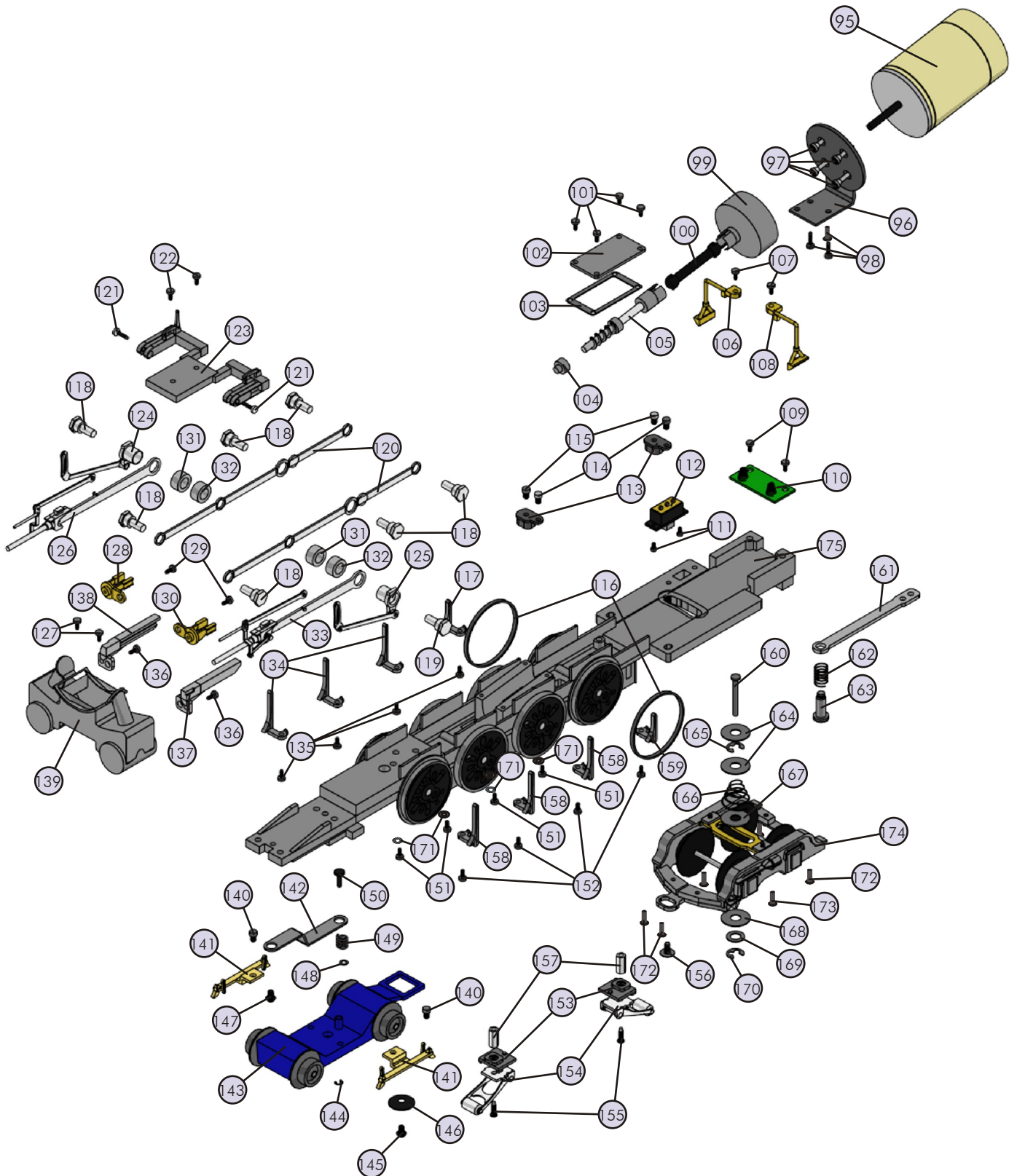
## Drive Block Parts

Name and Number	Part #	\$Price Per Unit
161.)Draw bar ( nickel ) ( 73.0mm long )	FB-1100017	3.00
162.)Spring ( nickel ) ( 6.5x16.0mm )( w/4.0mm thick wire )	IE-0000019	0.50
163.)Bolt ( black ) ( 8/32x19.0mm )( w/ 5.0x11.0mm shoulder ) ( slotted head )	IA-0000066	1.00
164.)Washer ( 5.5x15.0x0.6mm )	ID-0000039	0.15
165.)E-clip ( 3.5x9.0x0.6mm )	IF-0000009	0.15
166.)Spring ( nickel ) ( 8.0x13.0x14.0mm )( 0.7mm thick wire )	IE-0000020	0.50
167.)Washer ( 5.5x15.0x0.6mm )	ID-0000039	0.15
168.)Washer ( 5.5x15.0x0.6mm )	ID-0000039	0.15
169.)Washer ( 5.0x10.0x1.0mm )	ID-0000026	0.15
170.)E-clip ( 3.5x9.0x0.6mm )	IF-0000009	0.15
171.)Washer ( 3.0x6.0x0.4mm )	ID-0000040	0.15
172.)Screw ( 4/40x6.0mm )( roundhead )	IA-0000003	0.15
173.)Screw ( 4/40x4.0mm )( roundhead )	IA-0000021	0.15
174.)Truck ( black ) ( trailing )( 2 axle )( boiler )	DA-1140002	30.00
175.)Drive block ( black )(4 axle)	DF-1100001	*75.00

\*Requires Exchange  
All parts are priced as each



# GS-4 4-8-4 Steam Engine



# GS-4 4-8-4 Steam Engine

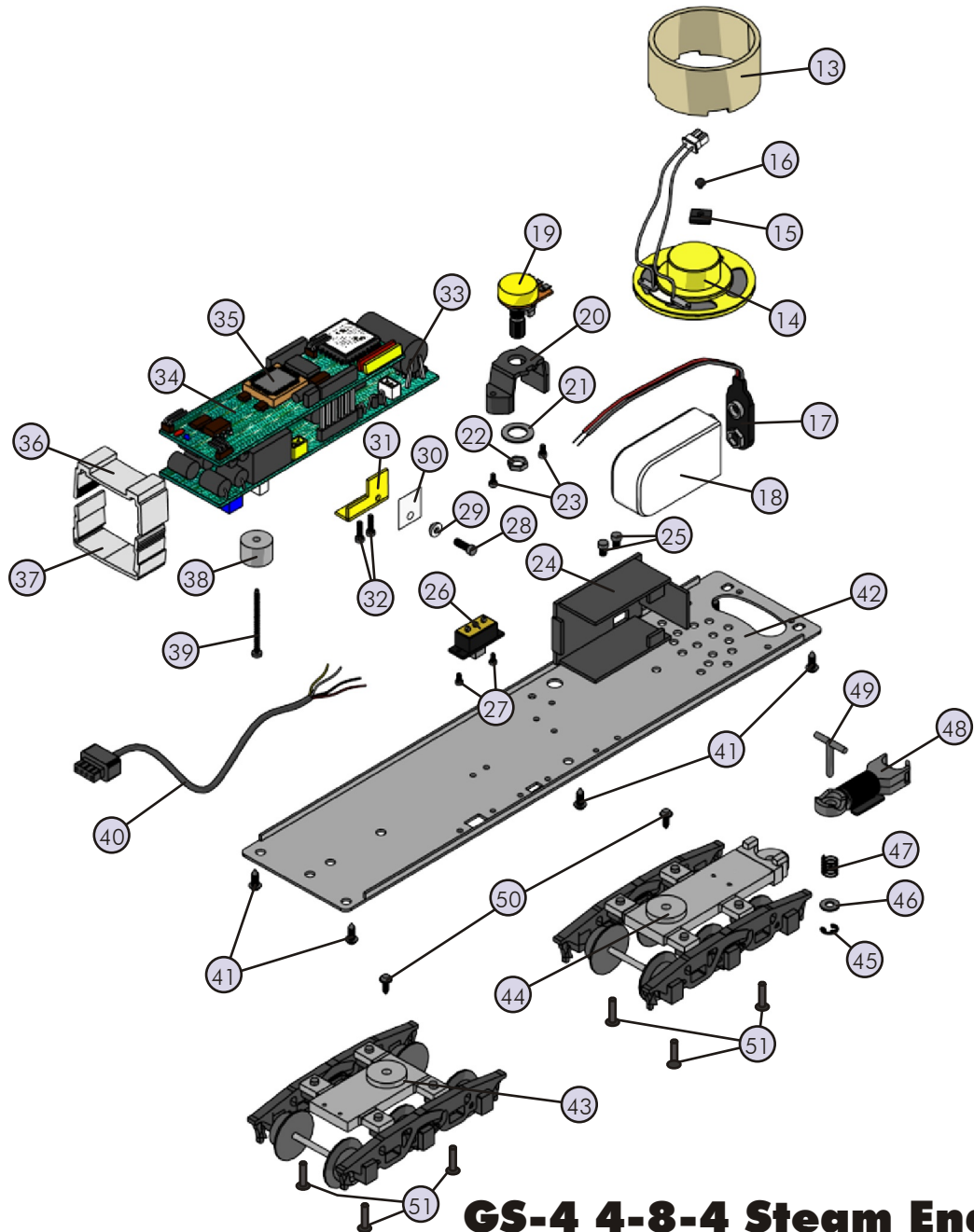
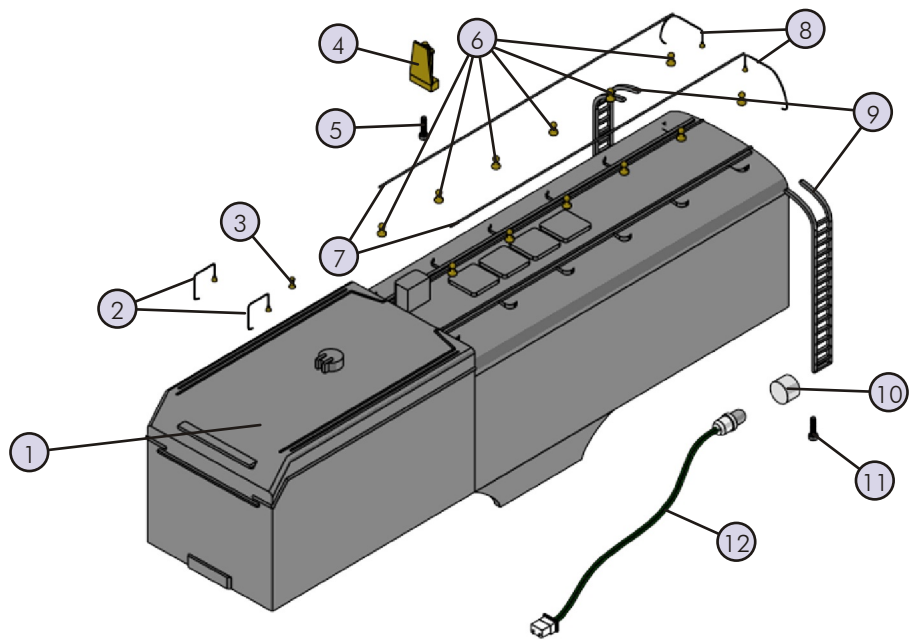
## Tender Parts

Name and Number	Part #	\$Price Per Unit	Name and Number	Part #	\$Price Per Unit
1.) Shell ( black, red, orange ) ( tender )( Southern Pacific Daylight )( # 4449 )	GA-1100001	*100.00	37.) Clip ( black ) ( Proto-Sound® board )( bottom )( plastic )	IF-0000007	1.00
2.) Handrail ( black ) ( tender )( front /top of tender )	GA-1150001	2.00	38.) Heat sink ( Aluminum ) ( 3.0x20.0x10.0mm )	AI-4500010	2.00
3.) Vent ( black )	GA-1100002	2.00	39.) Screw ( 4/40x25.0mm )( roundhead )	IA-0000056	0.15
4.) Fuel pump ( black )	GA-1100003	5.00	40.) Wire harness ( black ) ( tender )( 4 pin male flat plug )	BC-0000005	8.00
5.) Screw ( 4/40x6.0mm )( roundhead )	IA-0000003	0.15	41.) Screw ( 6/32x8.0mm )( roundhead )	IA-0000050	0.15
6.) Stanchion ( black )	GA-1100004	1.00	42.) Chassis ( black )	GB-1100001	*15.00
7.) Handrail ( nickel ) ( tender )( 151.0mm long )	GA-1150002	1.00	43.) Truck ( black ) ( 3 axle )( lead )( tender )( no coupler mount )	DA-1130001	30.00
8.) Handrail ( black ) ( tender )( back / top of tender )	GA-1150003	1.00	44.) Truck ( black ) ( 3 axle )( trailing )( tender )( has coupler mount )	DA-1140001	30.00
9.) Ladder ( black )	GA-1150004	4.00	45.) E-clip ( black ) ( 3.0x8.0x0.5mm )	IF-0000002	0.15
10.) Lens ( clear )( back-up light )	FA-1140001	2.00	46.) Washer ( black ) ( 5.0x10.0x1.0mm )	ID-0000026	0.15
11.) Screw ( 6/32x8.0mm )( roundhead )	IA-0000050	0.15	47.) Spring ( nickel ) ( 6.5x11.0mm )( w/ 0.4mm thick wire )	IE-0000007	0.15
12.) Bulb ( clear ) ( 1.5v )( grain of wheat )( back-up light ) ( 210.0mm long wires w/ green plug )	CF-0000003	2.00	48.) Proto-Coupler® ( 51.5mm long )	DD-0000001	10.00
13.) Speaker cone	BF-0000002	2.00	49.) T-bar ( black ) ( 4.0x20.0mm )( plastic )	IG-0000001	0.50
14.) Speaker ( Star, PR-05004-08 )( 8 ohms )( 0.2 watt )	BF-4500008	8.95	50.) Screw ( 6/32x6.0mm )( washer head )	IA-0000214	0.15
15.) Bracket ( black ) ( speaker )( 9.0x9.5mm )	IH-0000044	1.00	51.) Screw ( 4/40x6.0mm )( roundhead )	IA-0000003	0.15
16.) Screw ( M2.5x4.0mm )( roundhead )	IA-0000023	0.15			
17.) Battery leads ( 145.0mm long wires )	BC-0000003	3.00			
18.) Battery	BG-4000001	9.95			
19.) Volume pot ( B10K SW )( w/ 200.0mm long wires )	BI-0000017	5.00			
20.) Bracket ( black ) ( volume pot )( plastic )( u-shaped )	IH-0000023	2.00			
21.) Washer ( black ) ( 7.0x12.0x0.5mm )	ID-0000034	0.15			
22.) Nut ( nickel ) ( 6.0x10.0x2.0 )	IC-0000007	0.50			
23.) Screw ( M3x8.0mm )( roundhead )( plastic cutting threads )	IA-0000204	0.15			
24.) Bracket ( black ) ( battery )( horizontal mount )( plastic )	IH-0000048	3.00			
25.) Screw ( 4/40x4.0mm )( roundhead )	IA-0000021	0.15			
26.) Switch ( large )	BB-0000010	5.00			
27.) Screw ( M2x4.0mm )( roundhead )	IA-0000058	0.15			
28.) Screw ( 4/40x6.0mm )( roundhead )	IA-0000003	0.15			
29.) Insulator washer ( white ) ( 6.0x4.0x2.5mm )( plastic )	ID-0000033	0.15			
30.) Insulator ( clear ) ( 13.0x19.0x0.1mm )( single hole )	ID-0000024	1.00			
31.) Bracket ( brass ) ( Proto-Sound® boards )	IH-0000043	2.00			
32.) Screw ( 4/40x4.0mm )( roundhead )	IA-0000021	0.15			
33.) Proto-Sound® board ( bottom )	AD-4500001	*60.00			
34.) Proto-Sound® board ( top )	AE-4500001	*100.00			
35.) Proto-Sound Chip®	N/A	19.95			
36.) Clip ( black ) ( Proto-Sound® board )( top )( plastic )	IF-0000006	1.00			

\*Requires Exchange  
All parts are priced as each







# GS-4 4-8-4 Steam Engine

