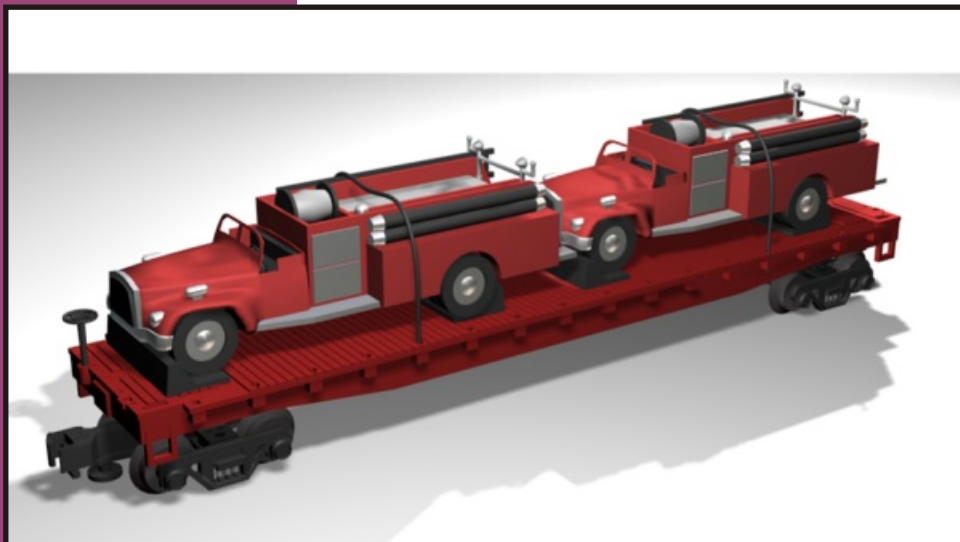




Flat Car w/Fire trucks

20-98114



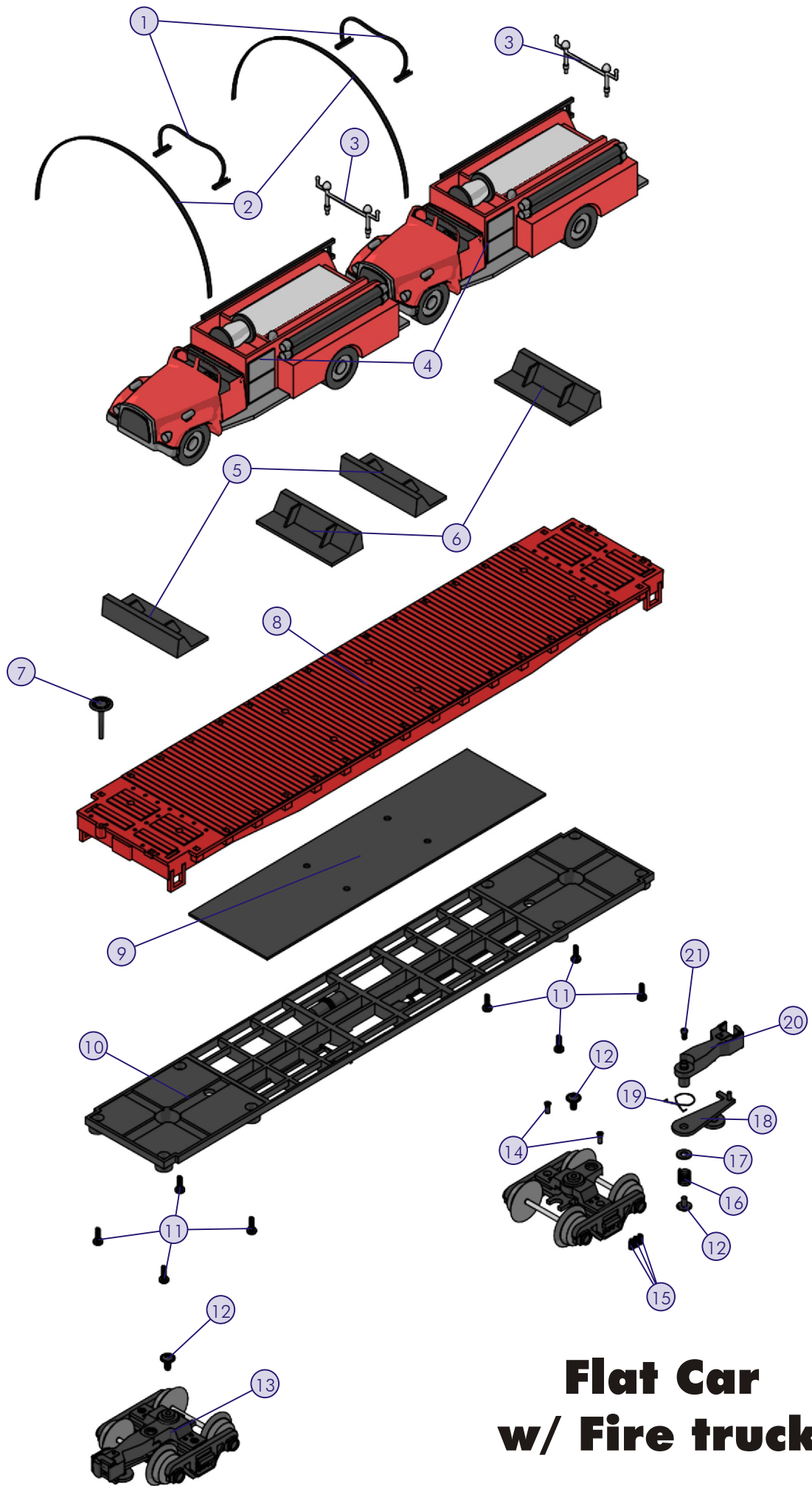
Flat Car w/ Fire trucks

Car Parts

Name and Number	Part #	\$Price Per Unit
1.) Elastic strap (102.0mm long)	IH-000097	1.00
2.) Wire tie	IH-0000101	0.25
3.) Light bar (chrome)	HG-0000024	2.00
4.) Fire truck (MTH Fire Dept.) (Fire Company No. 234)(red)	HG-0000025	*12.00
5.) Wheel chock (black) (21.0X42.0X10.0mm)	HE-0000001	2.00
6.) Wheel chock (black) (21.0X50.0X10.0mm)	HE-0000002	2.00
7.) Brake wheel (black)	HE-6100001	2.00
8.) Shell (Fire Co. No. 234) (MTH Fire Dept. Columbia, MD)(2000)(red)	HE-6100002	*15.00
9.) Weight (black) (52.2X189.0X1.2mm)	HE-6100003	4.00
10.) Chassis/undercarriage detail	HE-6100004	*12.00
11.) Screw (M3X6.0mm) (roundhead)(plastic cutting threads)	IA-0000205	0.15
12.) Screw (M3X5.0mm)(washer head)	IA-0000268	0.15
13.) Truck (2 axle) (black truck sides)(w/ truck side springs)	DA-0100006	6.00
14.) Screw (M2.5X6.0mm)(flathead)	IA-0000178	0.15
15.) Spring (truck side) (2.5X5.0X0.2mm)	IE-0000033	0.25
16.) Spring (6.0X8.0mm)(w/ 0.4mm thick wire)	IE-0000035	0.50
17.) Insulator washer (clear) (5.0X10.0X0.3mm)	ID-0000065	0.15
18.) Armature	DD-0000014	1.00
19.) Spring (centering)	IE-0000036	0.50
20.) Coupler	DD-0000015	3.00
21.) Screw (M2X4.0mm)(washer head)	IA-0000080	0.15

*Requires Exchange





Flat Car w/ Fire trucks

