



Flat Car

w/ Logs

20-98101

20-98102

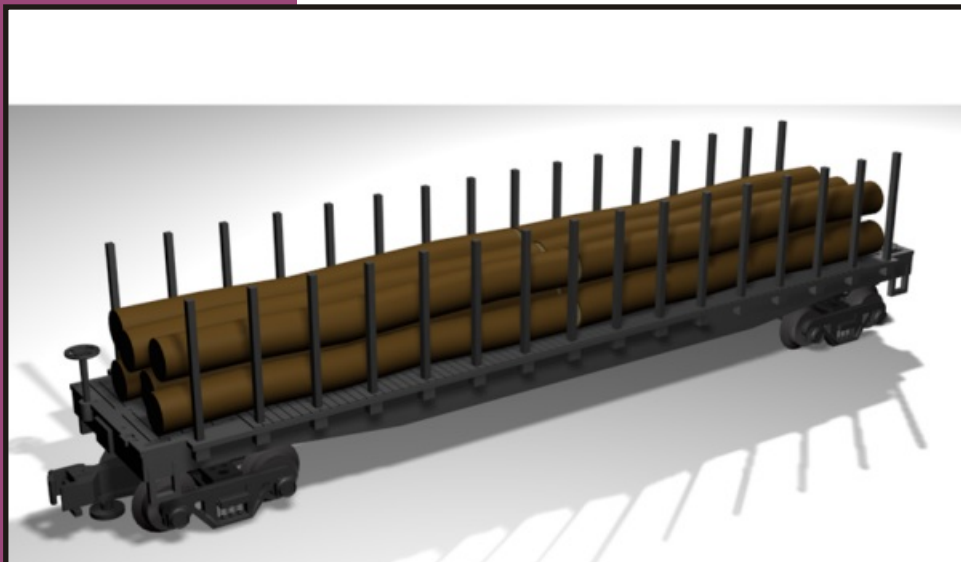
20-98103

20-98119

20-98120

20-90029

20-90037



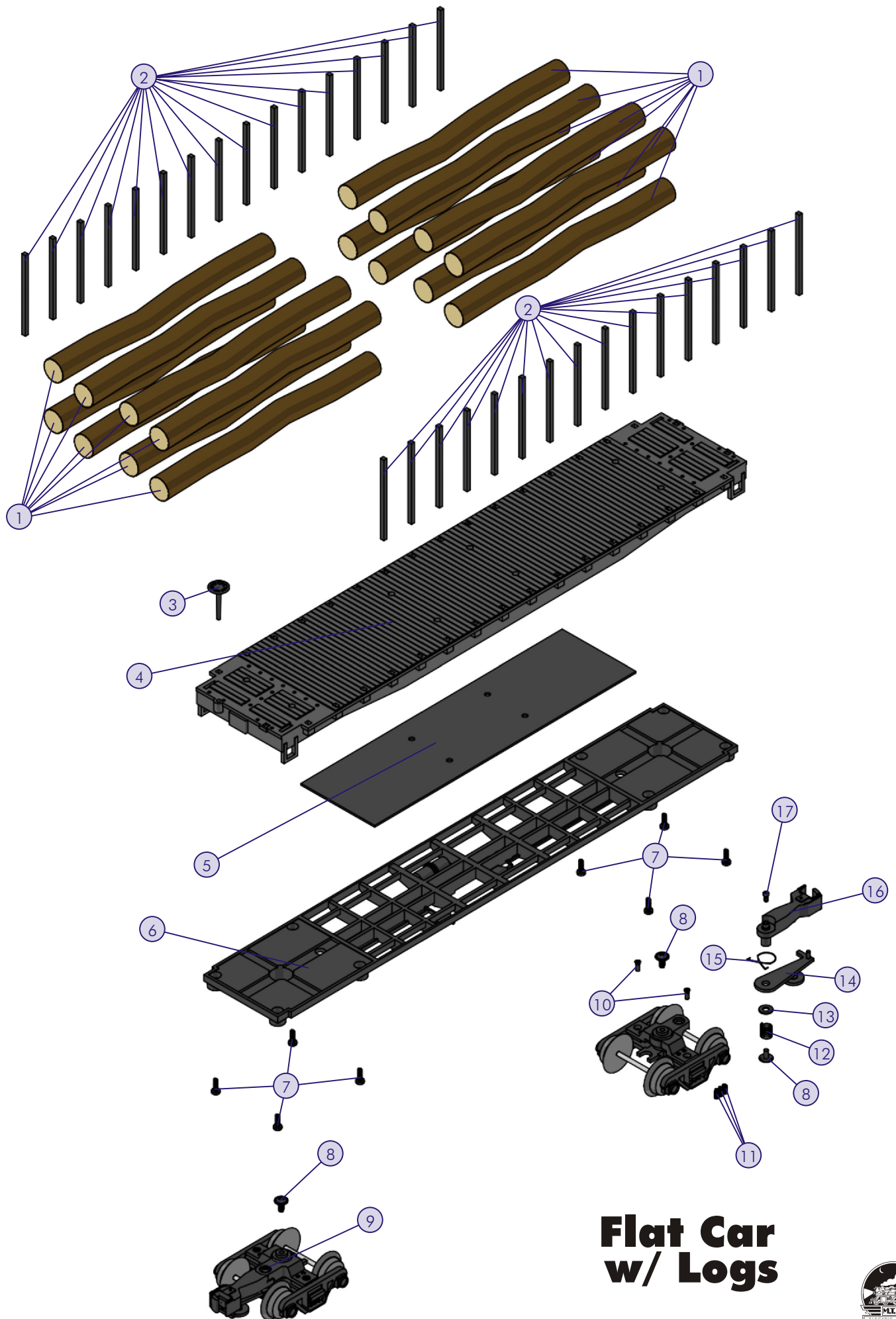
Flat Car w/ Logs

Parts

Name and Number	Part #	\$Price Per Unit	Name and Number	Part #	\$Price Per Unit
1.) Log (wood)	HE-6100009	0.50	13.) Insulator washer (clear)	ID-0000065	0.15
1.) Log (plastic)	HE-6100029	0.50	(5.0x10.0x0.3mm)		
2.) Stake (black)	HE-6100010	0.20	14.) Armature	DD-0000014	1.00
3.) Brake wheel (black)	HE-6100001	2.00	15.) Spring (centering)	IE-0000036	0.50
4.) Shell (black)	HE-6100011	*15.00	16.) Coupler	DD-0000015	3.00
(W.V.P&P. Co.)(# 153)			17.) Screw	IA-0000080	0.15
4.) Shell (black)	HE-6100012	*15.00	(M2x4.0mm)(washer head)		
(W.V.P&P. Co.)(# 162)					
4.) Shell (black)	HE-6100013	*15.00			
(W.V.P&P. Co.)(# 169)					
4.) Shell (black)	HE-6100014	*15.00			
(W.V.P&P. Co.)(# 176)					
4.) Shell (gray)	HE-6100015	*15.00			
(Western Maryland)(# WM 2317)					
4.) Shell (black)	HE-6100016	*15.00			
(Hillcrest Lumber CO. LTD.)(# 1)					
4.) Shell (black)	HE-6100017	*15.00			
(Hillcrest Lumber CO. LTD.)(# 2)					
4.) Shell (black)	HE-6100018	*15.00			
(Hillcrest Lumber CO. LTD.)(# 3)					
4.) Shell (black)	HE-6100019	*15.00			
(Hillcrest Lumber CO. LTD.)(# 4)					
4.) Shell (black)	HE-6100020	*15.00			
(Hillcrest Lumber CO. LTD.)(# 5)					
4.) Shell (black)	HE-6100021	*15.00			
(Hillcrest Lumber CO. LTD.)(# 6)					
4.) Shell (black)	HE-6100022	*15.00			
(Hillcrest Lumber CO. LTD.)(# 7)					
4.) Shell (black)	HE-6100023	*15.00			
(Hillcrest Lumber CO. LTD.)(# 8)					
4.) Shell (black)	HE-6100024	*15.00			
(Hillcrest Lumber CO. LTD.)(# 9)					
4.) Shell (black)	HE-6100025	*15.00			
(Hillcrest Lumber CO. LTD.)(# 10)					
4.) Shell (black)	HE-6100026	*15.00			
(Hillcrest Lumber CO. LTD.)(# 11)					
4.) Shell (black)	HE-6100027	*15.00			
(Hillcrest Lumber CO. LTD.)(# 12)					
4.) Shell (red)	HE-6100028	*15.00			
(Canadian National)(# CN 681019)					
4.) Shell (red)	HE-6100065	*15.00			
(Midland Valley)(# 24283)					
5.) Weight (black)	HE-6100003	4.00			
(52.2x189.0x1.2mm)					
6.) Chassis/undercarriage detail	HE-6100004	*12.00			
(black)					
7.) Screw	IA-0000205	0.15			
(M3x6.0mm)(roundhead)(plastic cutting threads)					
8.) Screw	IA-0000268	0.15			
(M3x5.0mm)(washer head)					
9.) Truck (2 axle)	DA-0100006	6.00			
(black truck sides)(w/ truck side springs)					
10.) Screw	IA-0000178	0.15			
(M2.5x6.0mm)(flathead)					
11.) Spring (truck side)	IE-0000033	0.25			
(2.5x5.0x0.2mm)					
12.) Spring	IE-0000035	0.50			
(6.0x8.0mm)(w/ 0.4mm thick wire)					

*Requires Exchange
All parts are priced as each





Flat Car w/ Logs

