



NJ TRANSIT ALP-46 ELECTRIC ENGINE W/PROTO-SOUND® 3.0

20-5635-1

20-5635-2

20-5635-3

20-5661-1

20-5661-2

PARTS LIST & EXPLODED VIEW

REV. 07.2015

PARTS LIST: NJ TRANSIT ALP-46 ELECTRIC ENGINE



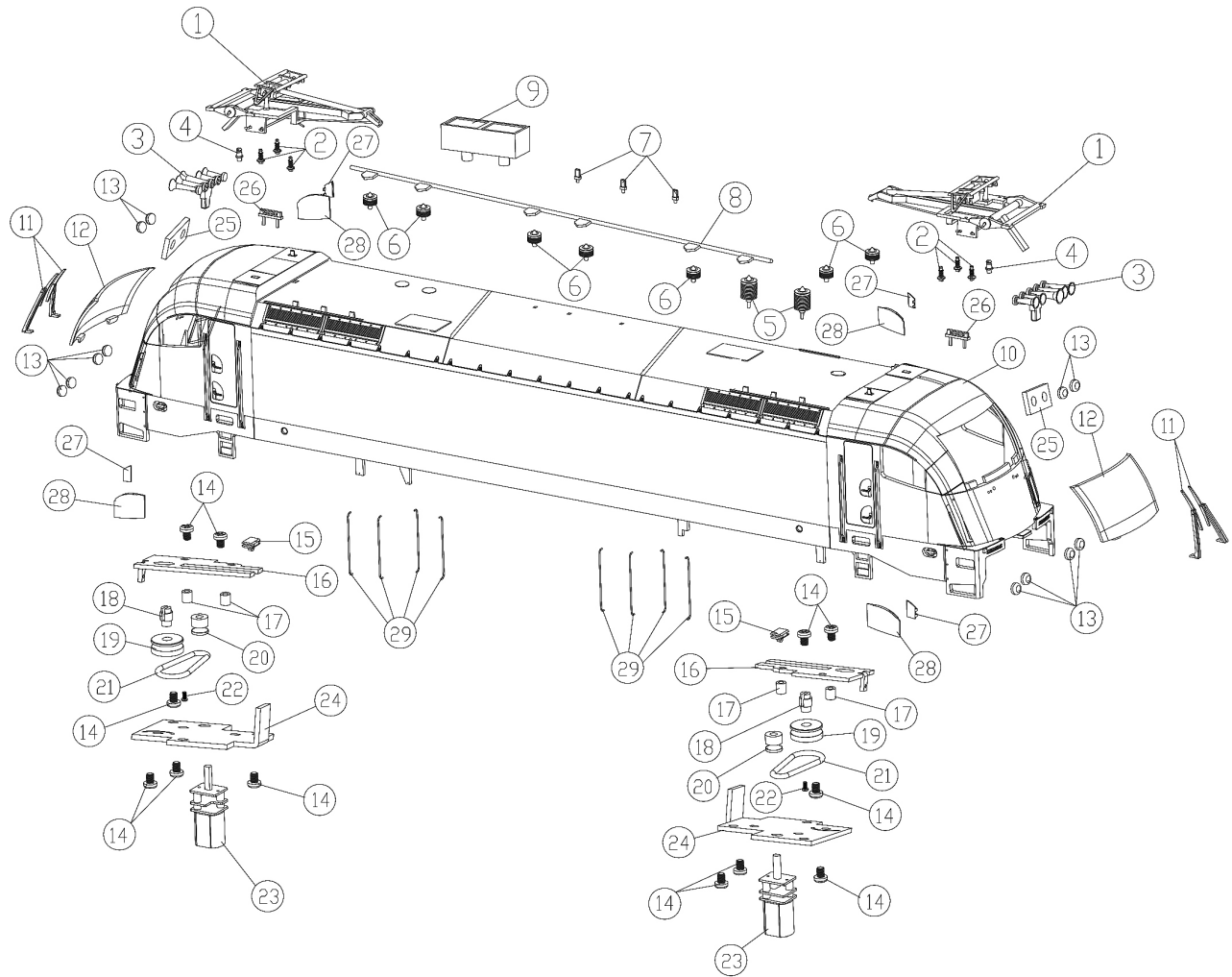
1.) PANTOGRAPH	BI-3103001001
2.) INSULATOR(A)	BD-3103002001
3.) HORN(A)	BF-3103003001
4.) PANTOGRAPH SPRING COVER	IC-3103004001
5.) INSULATOR(B)	BD-3103005001
6.) PIPE INSULATOR(A)	BD-3103006001
7.) LIFTING RING	FC-3103007001
8.) PANTO PIPE	FI-3103008001
9.) ROOF BOX	BD-3103009001
10.) BODY(CURVED# 20-5661-1 4615)	FC-3103010001
BODY(CURVED# 20-5661-1 4624)	FC-3103010002
BODY(CURVED# 20-5661-1 4618)	FC-3103010003
BODY(CURVED# 20-5661-2 4615)	FC-3103010004
BODY(CURVED# 20-5661-2 4624)	FC-3103010005
BODY(CURVED# 20-5661-2 4618)	FC-3103010006
BODY(LOCOMOTIVE# 20-5635-1 4611)	FC-3103010007
BODY(LOCOMOTIVE# 20-5635-1 4621)	FC-3103010008
BODY(LOCOMOTIVE# 20-5635-2 4611)	FC-3103010009
BODY(LOCOMOTIVE# 20-5635-2 4621)	FC-3103010010
BODY(LOCOMOTIVE# 20-5635-2 4626)	FC-3103010011
BODY(LOCOMOTIVE# 20-5635-3 4626)	FC-3103010012
11.) WIPER	FA-3103011001
12.) WINDOW GLASS	FA-3103012001
13.) LAMP GUIDE	FA-3103013001
14.) SCREW, M3.0 X 4.0MM, BLACK	IA-0000010
15.) PANTO PLATE	FI-3103014001
16.) SLIDE FIX PLATE #1	FI-3103015001
17.) HEX NUT	IC-0000004
18.) PANTO PIN	IG-3103016001
19.) PULLEY(A)	FC-3103017001
20.) PULLEY(B)	FC-3103018001
21.) BELT	FC-3103019001
22.) SCREW (M1.4X3.0MM)(BLACK)	IA-0000120
23.) MOTOR-S BE-3103020001	
24.) SLIDE FIX PLATE #2	FI-3103021001
25.) NUMBER BOARD #4611	FC-3103062001
NUMBER BOARD #4615	FC-3103062002
NUMBER BOARD #4618	FC-3103062003
NUMBER BOARD #4621	FC-3103062004
NUMBER BOARD #4626	FC-3103062005
NAME AND NUMBER MTH PARTS	
26.) TOP DETAIL	FC-3103063001
27.) SIDE WINDOW GLASS	FA-3123064001
28.) MIRROR R(CLOSE)	CI-3103065001
29.) SIDE HANDRAIL	FC-3103066001

EXPLODED VIEW: NJ TRANSIT ALP-46 ELEC- TRIC ENGINE



NJ TRANSIT ALP-46 Electric Engine

Body



PARTS LIST: NJ TRANSIT ALP-46 CHASSIS



1.) RUBBER BAND	BI-4500004	52.) PICK UP PLATE	IH-3103057001
2.) TACH BOARD, PS3	AG-0000102	53.) HEX NUT	IC-0000004
3.) MOTOR	BE-3103022001	54.) PICK UP ROLLER ASSEMBLY	BD-3200001
4.) MOTOR MOUNT	BI-3103023001	55.) SCREW, M3 X 6.0MM, NI PLATED	IA-0000015
5.) SCREW(M3.0X14.0MM,W/LOCK WASHER)	IA-0000012	56.) EENINEMAN	FI-3103057001
6.) PS3.0 PCB HEATSINK	IH-3103024001	57.) FIREMAN	FI-3103058001
7.) SCREW(M3.0X6.0MM,BLACK)	IA-0000016	58.) TRUCK HOLDER(A)	FC-3103059001
8.) HO PANTO PCB	BA-3103025001	59.) UNDERFROM PLATE	FC-3103060001
9.) PANTO PCB BRACKET	IH-3103026001	60.) SAND FILLER HOLDER	FC-3103061001
10.) SCREW (M2.5X6.0MM) (BLACK)	IA-0000166	61.) SCREW(M3.0X6.0MM,FLATHEAD)	IA-0000073
11.) PS3 DIESEL/ELECTRIC BOARD	AE-1000034	62.) LED BULB	FC-3103062001
12.) PS3.0 PCB BRACKET	IH-3103027001	63.) EUROPEAN FINE COUPLER PIN	IG-3103064001
13.) LAMP GUIDE-S	CI-3103028001	64.) EUROPE FINE COUPLER BASE	CI-3103065001
14.) SEAT	FI-3103029001	65.) EUROPEAN FINE COUPLER HANDLE	FC-3103066001
15.) LAMP BRACKET	IH-3103030001	66.) EUROPEAN FINE COUPLER SPRING	IE-3103067001
16.) PATCH BOARD	AD-3103031001	67.) E-CLIP(3.5X8.0X0.5MM)	IF-0000002
17.) INSULATOR SPACE	BD-3103032001	68.) VOLTAGE BOARD	AE-3103063001
18.) SCREW (M3.0X7.0MM) (BLACK)			
19.) E/WIRE GUIDE	IH-3103033001		
20.) SWITCH, DPST LARGE	BB-3103034001		
21.) SWITCH, SPST SMALL	BB-3103035001		
22.) BRIGHTNESS POTENTIOMETER	BI-0000040		
23.) FLOOR	DH-3103036001		
24.) SCREW(1/8"XL16.0XD6.4MM,BLACK)			
25.) BUMPER	DG-3103037001		
26.) BUMPER SPRING	IE-3103038001		
27.) PILOT,FIXED TYPE,BLACK	DG-3103039001		
PILOT,FIXED TYPE,DARK GRAY	DG-3103039002		
PILOT,TRUCK MOUNTED TYPE,BLACK	DG-3103039003		
PILOT,TRUCK MOUNTED TYPE,DARK GRAY	DG-3103039004		
28.) SPEAKER BRACKET	IH-3103040001		
29.) HORN(FOR ALASKA,GM&O)	BF-3103041001		
30.) TRUCK HOLDER(A)	FC-3103042001		
31.) FUEL TANK,BLACK	FC-3103043001		
FUEL TANK,DARK GRAY			
32.) T-BAR	IG-0000001		
33.) PROTO-COUPLER, SHORT	DD-0000033		
34.) COUPLER PLATE	IH-3103044001		
35.) COIL COUPLER BASE	IH-3103045001		
36.) SPRING(5.5X14.0MM)	IE-0000007		
NAME AND NUMBER MTH PARTS			
37.) WASHER(5.0X10.0X1.0MM)	ID-0000009		
38.) E-CLIP(3.5X8.0X0.5MM)	IF-0000002		
39.) INSULATOR	BD-0000009		
40.) P/U WIRE PLATE	BI-3103046001		
41.) GEER BOX SET EG-3103047001			
42.) UNDERFROM PIPE(A)	DF-3103048001		
43.) UNDERFROM PIPE(C)	DF-3103049001		
44.) UNDERFROM PIPE(D)	DF-3103050001		
45.) UNDERFROM PIPE(B)	DF-3103051001		
46.) TRUCK SIDE FRAME-R	DB-3113052001		
47.) TRUCK SIDE FRAME-L	DB-3123053001		
48.) WHEEL AXLE SET A, SCALE	EG-3103054001		
49.) WHEEL AXLE SET B, SCALE	EG-3103055001		
50.) GEAR BOX COVER	EG-3103056001		
51.) SCREW (M2.0X7.0MM)(BLACK)	IA-0000059		

EXPLODED VIEW: NJ TRANSIT ALP-46 CHASSIS



NJ TRANSIT ALP-46 Electric Engine

Chassis

