



# FM Trainmaster

20-2231-1

20-2232-1

20-2233-1



GL050101

REV.050301



# FM Trainmaster Diesel Engine

## Body Parts

Name and Number	Part #	\$Price Per Unit	Name and Number	Part #	\$Price Per Unit
1.) Handrail ( nickel )( front & rear )	FC-2150033	8.00	8.) Air horns ( nickel )( 1 chime )	FC-2100721	5.00
2.) Wire strap ( white )( metal )	IH-0000103	1.00	9.) Handrail ( nickel )( right )( long )	FC-2110042	12.00
3.) Lens ( clear )( head/back-up light ) ( 1.8x5.2x5.6mm )( 1.0x5.8mm lens head ) ( 4 ribs for press fit )	FA-0000083	2.00	10.) Handrail ( nickel )( left )( long )	FC-2120043	12.00
4.) Lens ( clear )( mars light ) ( 3.0x8.0x7.2mm )( 1.5x8.6mm lens head ) ( 4 ribs for press fit )	FA-0000084	2.00	11.) Handrail ( nickel )( right )( short )	FC-2110043	6.00
5.) Number board ( left rear/right front )( Virginian )( # 2331 )	FG-2100132	2.00	12.) Handrail ( nickel )( left )( short )	FC-2120044	6.00
Number board ( left rear/right front )( Virginian )( # 2332 )	FG-2100133	2.00	13.) Window lens ( clear )( cab )( right )	FA-2100012	5.00
Number board ( left rear/right front )( Virginian )( # 2333 )	FG-2100134	2.00	14.) Window lens ( clear )( cab )( left )	FA-2100013	5.00
Number board ( left rear/right front )( Virginian )( # 2322 )	FG-2100135	2.00	15.) Engineer ( black man )	FI-0000030	5.00
Number board ( left rear/right front )( Virginian )( # 2323 )	FG-2100136	2.00	Engineer ( white man )	FI-0000001	5.00
Number board ( left rear/right front )( Virginian )( # 2324 )	FG-2100137	2.00	16.) Fireman/Brakeman/Conductor ( white man )	FI-0000009	5.00
Number board ( left rear/right front )( SP )( # 4810 )	FG-2100138	2.00	Fireman/Brakeman/Conductor ( black man )	FI-0000033	5.00
Number board ( left rear/right front )( SP )( # 4811 )	FG-2100139	2.00	17.) Engineer base ( gray )( right side )	FI-0000025	1.00
Number board ( left rear/right front )( SP )( # 4813 )	FG-2100140	2.00	18.) Brakeman base ( gray )( left side )	FI-0000024	1.00
6.) Number board ( right rear/left front )( Virginian )( # 2331 )	FG-2100141	2.00	19.) L.E.D.'s ( red )( 6v )( 2 ) ( 100.0mm long wires w/ yellow 2 pin male plug )	CC-0000038	4.00
Number board ( right rear/left front )( Virginian )( # 2332 )	FG-2100142	2.00	20.) Contact spring base ( black )( plastic )	BH-0000001	2.00
Number board ( right rear/left front )( Virginian )( # 2333 )	FG-2100143	2.00	21.) Contact spring ( copper )	IE-0000015	0.50
Number board ( right rear/left front )( Virginian )( # 2322 )	FG-2100144	2.00	22.) L.E.D.'s ( green )( 6v )( 2 ) ( 100.0mm long wires w/ yellow 2 pin male plug )	CC-0000039	4.00
Number board ( right rear/left front )( Virginian )( # 2323 )	FG-2100145	2.00	23.) Bulbs ( clear )( 6v )( 2 ) ( 145.0mm long wires w/ yellow 2 pin male plug ) ( grain of wheat )( cab interior )	CG-0000036	3.00
Number board ( right rear/left front )( Virginian )( # 2324 )	FG-2100146	2.00	24.) Screw ( M3x3.0mm )( roundhead )	IA-0000296	0.15
Number board ( right rear/left front )( SP )( # 4810 )	FG-2100147	2.00	25.) Grommet ( black ) ( cupped )( rubber )	IH-0000144	0.50
Number board ( right rear/left front )( SP )( # 4811 )	FG-2100148	2.00	26.) Bracket ( black )( rear )( metal ) ( headlight, mars light, number board lights )	IH-0000199	4.00
Number board ( right rear/left front )( SP )( # 4813 )	FG-2100149	2.00	27.) Light reflector ( black )( plastic )	CI-0000029	2.00
7.) Shell ( yellow, blue ) ( Virginian )( # 2331 )	FC-2100712	*100.00	28.) Bulbs ( clear )( 6v )( 2 ) ( 175.0mm long wires w/ red 2 pin male plug ) ( grain of wheat )( number boards light )	CC-0000040	3.00
Shell ( yellow, blue ) ( Virginian )( # 2332 )	FC-2100713	*100.00	29.) Bulb ( clear )( 6v )( 1 ) ( 175.0mm long wires w/ white 2 pin male plug ) ( grain of wheat )( mars light )	CB-0000005	3.00
Shell ( yellow, blue ) ( Virginian )( # 2333 )	FC-2100714	*100.00	30.) Bulb ( clear )( 6v )( 1 ) ( 175.0mm long wires w/ blue 2 pin male plug ) ( grain of wheat )( headlight )	CA-0000046	2.00
Shell ( yellow, black ) ( Virginian )( # 2322 )	FC-2100715	*100.00	31.) Bulb ( clear )( 6v )( 1 ) ( 175.0mm long wires w/ green 2 pin male plug ) ( grain of wheat )( back-up light )	CF-0000015	2.00
Shell ( yellow, black ) ( Virginian )( # 2323 )	FC-2100716	*100.00	32.) Screw ( M3x6.0mm )( roundhead )	IA-0000016	0.15
Shell ( yellow, black ) ( Virginian )( # 2324 )	FC-2100717	*100.00	33.) Grommet ( black ) ( 4.5x5.0mm )( rubber )	IH-0000010	0.15
Shell ( black, silver, orange, red ) ( SP )( # 4810 )	FC-2100718	*100.00	34.) Screw ( M2.5x4.0mm )( roundhead )	IA-0000005	0.15
Shell ( black, silver, orange, red ) ( SP )( # 4810 )	FC-2100719	*100.00	35.) Bracket ( gray )( metal ) ( interior light )( fits on motor cover )	IH-0000200	3.00
Shell ( black, silver, orange, red ) ( SP )( # 4810 )	FC-2100720	*100.00	36.) Motor cover ( gray )( plastic )	BI-0000010	7.00
			37.) Boards ( Proto-Sound 2.0® )	AE-0000001	*200.00
			38.) Screw ( M3x4.0mm )( roundhead )	IA-0000010	0.15
			39.) Bracket ( Aluminum ) ( 15.0x54.0mm )( 26.0mm step-up ) ( for Proto-Sound 2.0® boards )( tapped for 4/40 screw )	IH-0000201	3.00
			40.) Screw ( 4/40x18.0mm )( roundhead )	IA-0000094	0.15

\*Requires Exchange  
All parts are priced as each



# FM Trainmaster Diesel Engine

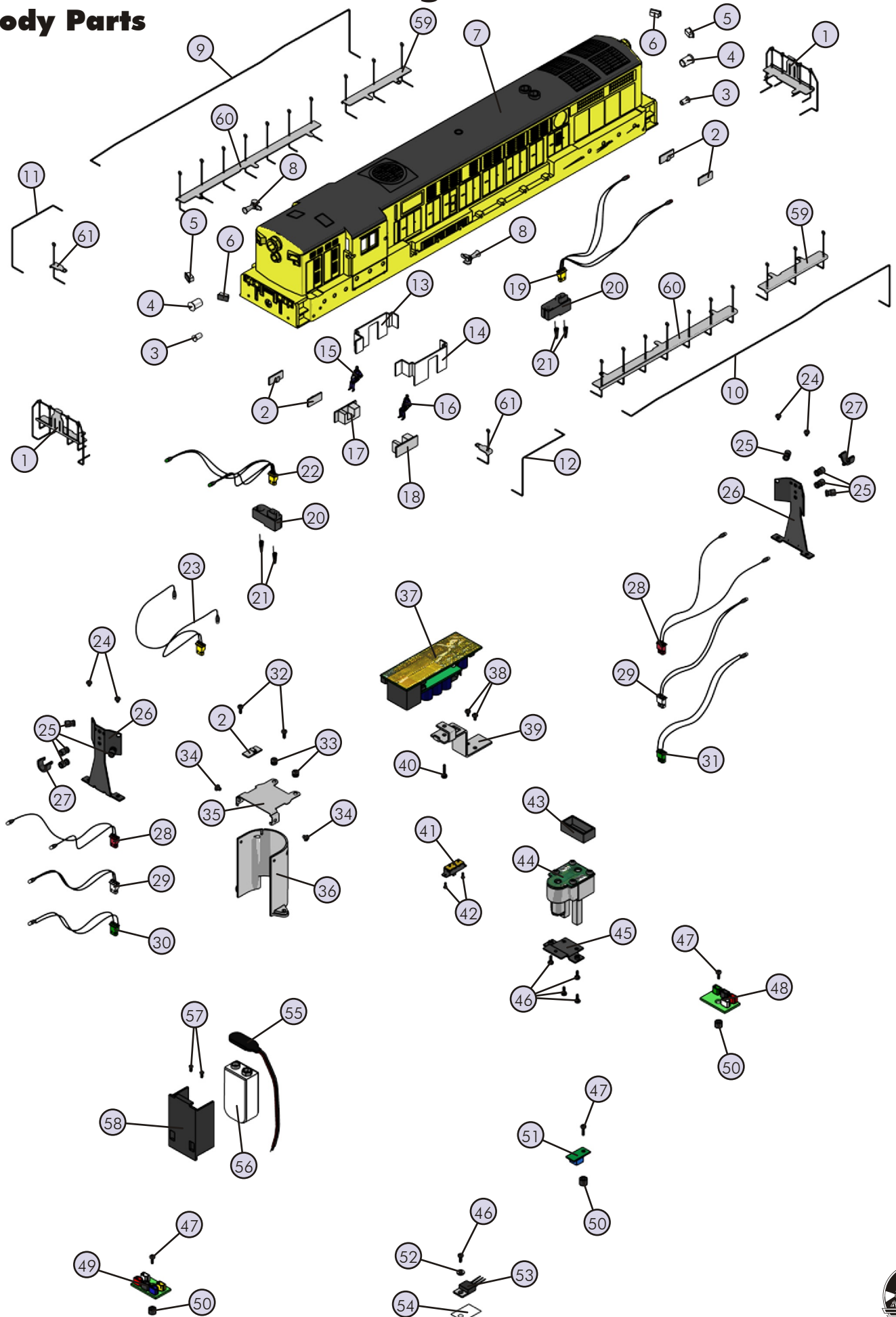
## Body Parts

Name and Number	Part #	\$Price Per Unit
41.) Switch ( large )	BB-0000010	5.00
42.) Screw (M2x4.0mm)(roundhead)	IA-0000058	0.15
43.) Smoke unit funnel (black)(plastic) ( 12.7x24.7x8.0mm )( 4.2mm hole in center )	AA-0000038	2.00
44.) Smoke unit ( Proto-Sound 2.0® ) ( 3.3x4.2x2.6x6.0x6.2mm black smoke stack ) ( 26.0mm long mounting posts )	AA-0000039	50.00
45.) Bracket ( black ) ( metal )( for smoke unit )	IH-0000202	3.00
46.) Screw (4/40x6.0mm)(roundhead)	IA-0000003	0.15
47.) Screw (M3x8.0mm)(roundhead)	IA-0000035	0.15
48.) Patch board ( 20.3x27.3mm ) ( green, black, red & white 2 pin female sockets )	AG-0000049	8.00
49.) Patch board ( 20.3x27.3mm ) (yellow, blue, black, red & white 2 pin female sockets)	AG-0000050	8.00
50.) Spacer ( black ) ( 3.0x6.0x4.3mm )( plastic )	ID-0000071	0.15
51.) Volume pot ( small volume pot )( blue w/ green board )	BI-0000040	5.00
52.) Insulator ( white ) ( washer )( 3.0x6.0x3.0mm )( plastic )	ID-0000025	0.15
53.) Voltage regulator ( LM2937ET )	AG-0000032	3.00
54.) Insulator ( clear ) ( 13.0x19.0x0.1mm )( single hole )	ID-0000024	0.15
55.) Battery leads (120.0mm long wires w/ small 2 pin black male plug)	BC-0000089	3.00
56.) Battery	BG-4000001	9.95
57.) Screw ( M3x4.0mm )( roundhead )	IA-0000010	0.15
58.) Bracket ( black ) ( battery )( vertical mount )( plastic )	IH-0000042	3.00
59.) Walkway ( nickel ) ( w/ stanchions )( rear )	FC-2100723	6.00
60.) Walkway ( nickel ) ( w/ stanchions )( middle )	FC-2100724	8.00
61.) Walkway ( nickel ) ( w/ stanchion )( front )	FC-2100725	3.00
NS.) Wire harness (12 pin male plug)	BC-2100005	15.00
NS.) Wire harness ( 7 pin male plug )	BC-2100006	10.00
NS.) Wire harness ( 5 pin male plug )	BC-2100007	4.00
NS.) Wire harness ( 4 pin male plug )	BC-2100008	4.00

\*Requires Exchange  
All parts are priced as each



# FM Trainmaster Diesel Engine Body Parts



# FM Trainmaster Diesel Engine

## Chassis Parts

Name and Number	Part #	\$Price Per Unit	Name and Number	Part #	\$Price Per Unit
1.) Wire nut ( yellow )	BI-4500003	0.25	32.) Washer ( 4.5x10.0x0.5mm )	ID-0000009	0.15
2.) Tach board ( green )	AG-0000033	6.00	33.) E-clip ( 3.0x8.0x0.5mm )	IF-0000002	0.15
3.) Motor ( RS-385PH ) ( w/ 8.2x22.5mm worm gear )( 14.0mm long threads ) ( 9.0x30.0mm black flywheel ) ( has black bracket for tach board )	BE-0000090	25.00	34.) Traction Tire	DE-0000018	0.75
4.) Motor ( RS-385PH ) ( w/ 8.2x22.5mm worm gear )( 14.0mm long threads ) ( 9.0x30.0mm black flywheel )	BE-0000091	25.00	35.) Truck ( black )( powered ) ( 3 axle )( 2 screw holes for 2 screw mount pilot )	DA-2050013	*35.00
5.) Tach tape ( 1.96mm wide stripes )( for 30.0mm flywheel )	BE-0000069	1.00	36.) Nut ( nickel )( 2.5x5.0x7.0mm )	IC-0000008	0.50
6.) Screw ( M3x4.0mm )( roundhead )	IA-0000010	0.15	37.) Insulator ( black ) ( pick-up )( bottom )( plastic )	BD-0000001	2.00
7.) Contact spring board ( 14.5x19.5x23.2mm )( 1.5mm thick )	BH-0000044	2.00	38.) Pick-up ( 8.0x11.0mm roller )( 24.0mm long )	BD-0000050	5.00
8.) Contact spring board ( 14.1x27.1mm )( 1.5mm thick )	BH-0000045	2.00	39.) Snow plow ( black )	FH-2130001	3.00
9.) Motor mount ( black ) ( fits 3 axle Premier diesel trucks )	BI-0000053	15.00			
10.) Screw ( yellow Zink ) ( M2.5x6.0mm )( roundhead )( w/ lock washer )	IA-0000001	0.15			
11.) Screw ( M3x14.0mm )( roundhead )( w/ lock washer )	IA-0000012	0.15			
12.) Screw ( 4/40x4.0mm )( roundhead )	IA-0000021	0.15			
13.) Bracket ( brass )( metal ) ( 10.x79.5x1.0mm )( 13.0mm step on each end )	IH-0000203	3.00			
14.) Speaker cone (black w/ gray top) ( 48.0x13.0mm )( 1 notch on side for speaker wires )	BF-0000019	2.00			
15.) Chassis (black)(57.0x386.0mm)	DH-2100028	*15.00			
16.) Screw ( M3x6.0mm )( flathead )	IA-0000073	0.15			
17.) Screw ( M3x16.0mm )( washer head )( self-drilling )	IA-0000025	0.15			
18.) Bracket ( black )( speaker ) ( 9.0x10.5mm )( 2.0mm step ) ( rounded corners by mounting end )	IH-0000204	1.00			
19.) Gasket ( black )( speaker ) ( foam )( 46.0x51.0mm )( 4.5mm thick )	IB-0000011	1.00			
20.) Speaker ( STAR ) ( PR-050-A111 )( 16 ohms )( MAX 2W )( 121E )	BF-0000007	8.95			
21.) Fuel tank ( black )	FC-2100722	*15.00			
22.) Screw ( 4/40x6.0mm )( flathead )	IA-0000038	0.15			
23.) Pilot ( black ) ( pilot has 2 screw holes for mounting pilot )	DG-2150029	15.00			
24.) Screw ( 4/40x6.0mm )( roundhead )	IA-0000003	0.15			
25.) Screw ( nickel ) ( M3x6.0mm )( roundhead )	IA-0000015	0.15			
26.) Insulator ( black ) ( top )( square )( pick-up )	BD-0000015	2.00			
27.) Truck side ( black ) ( right rear/left front )( 3 axle truck ) ( truck side screws mount from the top )	DB-2100034	8.00			
28.) Truck side ( black ) ( left rear/right front )( 3 axle truck ) ( truck side screws mount from the top )	DB-2100035	8.00			
29.) T-bar ( black )( plastic )	IG-0000001	0.50			
30.) Proto-Coupler 2.0® ( 51.0mm long )	DD-0000032	10.00			
31.) Spring ( nickel ) ( 6.5x14.0mm )( w/ 0.5mm thick wire )	IE-0000022	0.50			

\*Requires Exchange  
All parts are priced as each



# FM Trainmaster Diesel Engine Chassis Parts

