



FM Trainmaster

- 20-2182-1
- 20-2183-1
- 20-2201-1
- 20-2202-1
- 20-80001d



GL051101

FM Trainmaster Diesel Engine

Body Parts

Name and Number	Part #	\$Price Per Unit	Name and Number	Part #	\$Price Per Unit
1.) Handrail (nickel)(front & rear)	FC-2150033	8.00	5.) Lens (clear)(mars light)	FA-0000084	2.00
1.) Handrail (black)(front & rear)	FC-2150034	8.00	(3.0x8.0x7.2mm)(1.5x8.6mm lens head)		
(Milwaukee Road)(Fairbanks Morse Demo)			(4 ribs for press fit)		
2.) Number board	FG-2100150	2.00	Lens (clear)(mars light)	FA-0000086	2.00
(left rear/right front)(CP)(# 8902)			(3.1x8.1x8.6mm)(11.2x12.0x1.5mm base)		
Number board	FG-2100151	2.00	(4 ribs for press fit)(CP)(Fairbanks Morse Demo)		
(left rear/right front)(CP)(# 8905)			6.) Shell (maroon, gray, yellow)	FC-2100730	*100.00
Number board	FG-2100152	2.00	(CP)(# 8902)		
(left rear/right front)(CP)(# 8906)			Shell (maroon, gray, yellow)	FC-2100731	*100.00
Number board	FG-2100153	2.00	(CP)(# 8905)		
(left rear/right front)(Fairbanks Morse Demo)(# TM-1)			Shell (maroon, gray, yellow)	FC-2100732	*100.00
Number board	FG-2100154	2.00	(CP)(# 8906)		
(left rear/right front)(Fairbanks Morse Demo)(# TM-2)			Shell (red, yellow)	FC-2100733	*100.00
Number board	FG-2100155	2.00	(Fairbanks Morse Demo)(# TM-1)		
(left rear/right front)(Fairbanks Morse Demo)(# TM-4)			Shell (red, yellow)	FC-2100734	*100.00
Number board	FG-2100156	2.00	(Fairbanks Morse Demo)(# TM-2)		
(left rear/right front)(JCL)(# 2341)			Shell (red, yellow)	FC-2100735	*100.00
Number board	FG-2100157	2.00	(Fairbanks Morse Demo)(# TM-4)		
(left rear/right front)(JCL)(# 2344)			Shell (blue, orange)	FC-2100736	*100.00
Number board	FG-2100158	2.00	(JCL)(# 2341)		
(left rear/right front)(JCL)(# 2401)			Shell (blue, orange)	FC-2100737	*100.00
Number board	FG-2100159	2.00	(JCL)(# 2344)		
(left rear/right front)(Milwaukee Road)(# 4660)			Shell (blue, orange)	FC-2100738	*100.00
Number board	FG-2100160	2.00	(JCL)(# 2401)		
(left rear/right front)(Milwaukee Road)(# 4663)			Shell (orange, black)	FC-2100739	*100.00
Number board	FG-2100161	2.00	(Milwaukee Road)(# 4660)		
(left rear/right front)(Milwaukee Road)(# 4667)			Shell (orange, black)	FC-2100740	*100.00
Number board	FG-2100162	2.00	(Milwaukee Road)(# 4663)		
(left rear/right front)(Lackawanna)(# 2321)			Shell (orange, black)	FC-2100741	*100.00
3.) Number board	FG-2100163	2.00	(Milwaukee Road)(# 4667)		
(right rear/left front)(CP)(# 8902)			Shell (maroon, gray)	FC-2100742	*100.00
Number board	FG-2100164	2.00	(Lackawanna)(# 2321)		
(right rear/left front)(CP)(# 8905)			7.) Walkway (nickel)	FC-2100723	6.00
Number board	FG-2100165	2.00	(w/ stanchions)(rear)		
(right rear/left front)(CP)(# 8906)			Walkway (black)	FC-2100743	6.00
Number board	FG-2100166	2.00	(w/ stanchions)(rear)		
(right rear/left front)(Fairbanks Morse Demo)(# TM-1)			(Fairbanks Morse Demo)(Milwaukee Road)		
Number board	FG-2100167	2.00	8.) Walkway (nickel)	FC-2100724	8.00
(right rear/left front)(Fairbanks Morse Demo)(# TM-2)			(w/ stanchions)(middle)		
Number board	FG-2100168	2.00	Walkway (black)	FC-2100744	8.00
(right rear/left front)(Fairbanks Morse Demo)(# TM-4)			(w/ stanchions)(middle)		
Number board	FG-2100169	2.00	(Fairbanks Morse Demo)(Milwaukee Road)		
(right rear/left front)(JCL)(# 2341)			9.) Handrail (nickel)(right)(long)	FC-2110042	3.00
Number board	FG-2100170	2.00	Handrail (black)(right)(long)	FC-2110044	3.00
(right rear/left front)(JCL)(# 2344)			(Fairbanks Morse Demo)(Milwaukee Road)		
Number board	FG-2100171	2.00	10.) Handrail (nickel)(left)(long)	FC-2120043	3.00
(right rear/left front)(JCL)(# 2401)			Handrail (black)(left)(long)	FC-2120045	3.00
Number board	FG-2100172	2.00	(Fairbanks Morse Demo)(Milwaukee Road)		
(right rear/left front)(Milwaukee Road)(# 4660)			11.) Handrail (nickel)(right)(short)	FC-2110043	2.00
Number board	FG-2100173	2.00	Handrail (black)(right)(short)	FC-2110045	2.00
(right rear/left front)(Milwaukee Road)(# 4663)			(Fairbanks Morse Demo)(Milwaukee Road)		
Number board	FG-2100174	2.00	12.) Handrail (nickel)(left)(short)	FC-2120044	2.00
(right rear/left front)(Milwaukee Road)(# 4667)			Handrail (black)(left)(short)	FC-2120046	2.00
Number board	FG-2100175	2.00	(Fairbanks Morse Demo)(Milwaukee Road)		
(right rear/left front)(Lackawanna)(# 2321)			13.) Walkway (nickel)	FC-2100725	3.00
4.) Lens (clear)(head/back-up light)	FA-0000083	2.00	(w/ stanchion)(front)		
(1.8x5.2x5.6mm)(1.0x5.8mm lens head)			Walkway (black)	FC-2100745	3.00
(4 ribs for press fit)			(w/ stanchion)(front)		
Lens (clear)(head/back-up light)	FA-0000085	2.00	(Fairbanks Morse Demo)(Milwaukee Road)		
(1.9x5.2x6.9mm)(7.5x7.5x1.5mm base)			14.) Air horns (nickel)(1 chime)	FC-2100721	5.00
(4 ribs for press fit)(CP)(Fairbanks Morse Demo)					

*Requires Exchange
All parts are priced as each



FM Trainmaster Diesel Engine

Body Parts

Name and Number	Part #	\$Price Per Unit	Name and Number	Part #	\$Price Per Unit
15.) L.E.D.'s (red)(6v)(2) (60.0mm long wires w/ yellow 2 pin male plug) (CP)(Fairbanks Morse Demo)	CC-0000005	4.00	42.) Bulb (clear)(1.5v)(1) (320.0mm long wires w/ green 2 pin male plug) (grain of wheat)(back-up light) (CP)(Fairbanks Morse Demo)	CF-0000016	2.00
L.E.D.'s (green)(6v)(2) (60.0mm long wires w/ yellow 2 pin male plug) (JCL)(Milwaukee Road)(Lackawanna)	CC-0000034	4.00	Bulb (clear)(1.5v)(1) (195.0mm long wires w/ green 2 pin male plug) (grain of wheat)(back-up light) (JCL)(Milwaukee Road)(Lackawanna)	CF-0000017	2.00
16.) Contact spring base (black)(plastic)	BH-0000001	2.00	43.) Wire nut (yellow)	BI-4500003	0.25
17.) Contact spring (copper)	IE-0000015	0.50	44.) Contact spring board (13.0x24.0mm)(w/ copper contact strips) (CP)(Fairbanks Morse Demo)	BH-0000046	2.00
18.) Screw (4/40x35.0mm)(roundhead)(w/ 2.4x21.0mm long)	IA-0000147	0.15	Contact spring board (13.3x23.9mm)(w/ silver contact strips) (rounded corners on mounting end) (JCL)(Milwaukee Road)	BH-0000047	2.00
19.) Heat sink (Aluminum) (3.0x20.0x23.0mm)	AI-0000034	2.00	Contact spring board (13.3x23.9mm)(w/ silver contact strips) (notched in 1 corner)(Lackawanna)	BH-0000048	2.00
20.) Clip (black) (Proto-Sound® board)(bottom)(plastic)	IF-0000007	1.00	45.) Screw (4/40x4.0mm)(roundhead)	IA-0000021	0.15
21.) Clip (black) (Proto-Sound® board)(top)(plastic)	IF-0000006	1.00	46.) Screw (M2x4.0mm)(roundhead)	IA-0000058	0.15
22.) Board (Proto-Sound®)(bottom)	AD-4500001	*60.00	47.) Switch (large)	BB-0000010	5.00
23.) Board (Proto-Sound®)(top)	AE-4500001	*100.00	48.) Battery	BG-4000001	9.95
24.) Proto-Sound® Chip	N/A	19.95	49.) Battery leads (145.0mm long wires w/ white 2 pin male plug)	BC-4000009	5.00
25.) Brakeman base (gray)(left side)	FI-0000024	1.00	50.) Contact spring board (13.0x24.0mm)(w/ copper contact strips) (CP)(Fairbanks Morse Demo)	BH-0000049	2.00
26.) Engineer base (gray)(right side)	FI-0000025	1.00	Contact spring board (13.3x23.9mm)(w/ silver contact strips) (rounded corners on mounting end) (JCL)(Milwaukee Road)	BH-0000050	2.00
27.) Fireman/Brakeman/Conductor (white man)	FI-0000009	5.00	Contact spring board (14.8x25.3mm)(w/ silver contact strips) (2 mounting holes in center of board)(Lackawanna)	BH-0000051	2.00
28.) Engineer (white man)	FI-0000001	5.00	51.) Spacer (black)(metal) (3.0x4.5x5.0mm)	ID-0000100	1.00
29.) Window lens (clear)(cab)(right)	FA-2100012	5.00	52.) CV board (w/ 2 black , 2 white & 1 yellow 2 pin female plugs)	AG-0000051	30.00
30.) Window lens (clear)(cab)(left)	FA-2100013	5.00	53.) Screw (M3x8.0mm)(roundhead)	IA-0000035	0.15
Window lens (clear)(cab)(left) (no open window for Conductor) (CP)(Fairbanks Morse Demo)	FA-2100015	5.00	54.) Screw (4/40x6.0mm)(roundhead)	IA-0000003	0.15
31.) Light shield (gray)(plastic) (34.6x43.0mm)	CI-0000030	3.00	55.) Insulator (clear) (13.0x19.0x0.1mm)(single hole)	ID-0000024	0.15
32.) L.E.D.'s (red)(6v)(2) (60.0mm long wires w/ yellow 2 pin male plug) (CP)(Fairbanks Morse Demo) (JCL)(Milwaukee Road)(Lackawanna)	CC-0000005	4.00	56.) Insulator (white) (washer)(3.0x6.0x3.0mm)(plastic)	ID-0000025	0.15
33.) Smoke unit funnel (black)(plastic) (12.7x24.7x8.0mm)(4.2mm hole in center)	AA-0000038	2.00	57.) Screw (4/40x4.0mm)(roundhead)	IA-0000021	0.15
34.) Smoke unit (3.4x4.5x6.0x2.3x11.4mm black smoke stack) (smoke stack sits in center of the board) (26.0mm long mounting posts)	AA-0000040	50.00	58.) Bracket (brass) (15.0x26.3mm)(13.0mm & 21.5mm step)	IH-0000201	3.00
35.) Screw (4/40x6.0mm)(roundhead)	IA-0000003	0.15	59.) Screw (M3x8.0mm)(roundhead)(self-drilling)	IA-0000072	0.15
36.) Screw (4/40x4.0mm)(roundhead)	IA-0000021	0.15	60.) Nut (nickel) (6.0x10.0x2.0)(for volume pot)	IC-0000007	0.50
37.) Grommet (black) (4.5x5.0mm)(rubber)	IH-0000010	0.15	61.) Washer (7.0x12.0x0.5mm)	ID-0000034	0.15
38.) Light reflector (black)(plastic) (JCL)(Milwaukee Road)(Lackawanna)	CI-0000029	2.00			
39.) Bracket (black)(rear)(metal) (headlight, mars light, number board lights) (JCL)(Milwaukee Road)(Lackawanna)	IH-0000199	4.00			
Bracket (black)(rear)(metal) (headlight, mars light, number board lights) (w/ brass reflector)(CP)(Fairbanks Morse Demo)	IH-0000205	4.00			
40.) Bulbs (clear)(6v)(2) (195.0mm long wires w/ black 2 pin male plug) (grain of wheat)(number boards light)	CC-0000041	3.00			
41.) Bulb (clear)(6v)(1) (195.0mm long wires w/ white 2 pin male plug) (grain of wheat)(mars light)	CB-0000006	3.00			

*Requires Exchange
All parts are priced as each



FM Trainmaster Diesel Engine

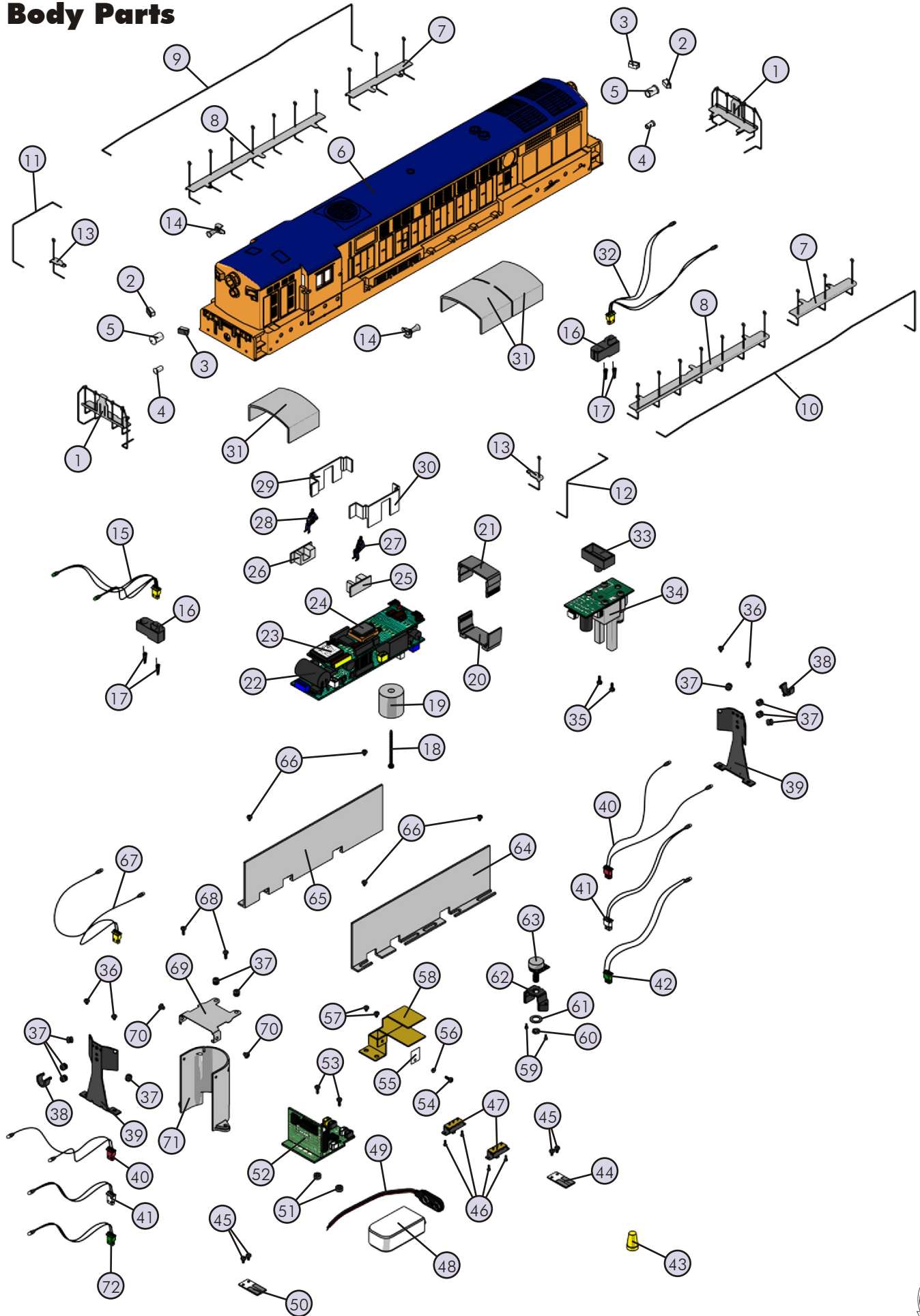
Body Parts

Name and Number	Part #	\$Price Per Unit
62.) Bracket (black) (volume pot)(plastic)(u-shaped)	IH-0000023	2.00
63.) Volume pot (B10K)(SW)(w/ 90.0mm long wires)	BI-0000054	5.00
64.) Wire shield (gray) (plastic)(left)(50.0x156.0mm)	FI-0000035	3.00
65.) Wire shield (gray) (plastic)(right)(50.0x156.0mm)	FI-0000036	3.00
66.) Screw (M3x4.0mm)(roundhead)(CP)(Fairbanks Morse Demo)	IA-0000010	0.15
Screw (4/40x4.0mm)(roundhead) (JCL)(Milwaukee Road)(Lackawanna)	IA-0000021	0.15
67.) Bulbs (clear)(6v)(2) (135.0mm long wires w/ black 2 pin male plug) (grain of wheat)(cab interior)	CG-0000038	3.00
68.) Screw (4/40x6.0mm)(washer head)	IA-0000028	0.15
69.) Bracket (gray)(metal) (interior light)(fits on motor cover)	IH-0000200	3.00
70.) Screw (M2.5x4.0mm)(roundhead)	IA-0000005	0.15
71.) Motor cover (gray)(plastic)	BI-0000010	7.00
72.) Bulb (clear)(1.5v)(1) (320.0mm long wires w/ blue 2 pin male plug) (grain of wheat)(headlight) (CP)(Fairbanks Morse Demo)	CA-0000048	2.00
Bulb (clear)(1.5v)(1) (195.0mm long wires w/ blue 2 pin male plug) (grain of wheat)(headlight) (JCL)(Milwaukee Road)(Lackawanna)	CA-0000049	2.00

*Requires Exchange
All parts are priced as each



FM Trainmaster Diesel Engine Body Parts



FM Trainmaster Diesel Engine

Chassis Parts

Name and Number	Part #	\$Price Per Unit	Name and Number	Part #	\$Price Per Unit
1.) Rubber band	BI-4500004	0.50	19.) Insulator (black)	BD-0000015	2.00
2.) Motor (RS-385PH)	BE-0000092	25.00	(top)(square)(pick-up)		
(w/ 8.2x22.5mm worm gear)(14.0mm long threads)			20.) Screw	IA-0000016	0.15
(9.0x30.0mm brass flywheel)			(M3x6.0mm)(roundhead)		
3.) Motor (RS-385PH)	BE-0000091	25.00	21.) Truck side (black)	DB-2100034	8.00
(w/ 8.2x22.5mm worm gear)(14.0mm long threads)			(right rear/left front)(3 axle truck)		
(9.0x30.0mm black flywheel)			(truck side screws mount from the top)		
4.) Motor mount (black)	BI-0000053	15.00	Truck side (silver)(3 axle truck)	DB-2100036	8.00
(fits 3 axle Premier diesel trucks)			(right rear/left front)(Fairbanks Morse Demo)		
5.) Screw (yellow Zink)	IA-0000001	0.15	(truck side screws mount from the top)		
(M2.5x6.0mm)(roundhead)(w/ lock washer)			22.) Truck side (black)	DB-2100035	8.00
6.) Screw	IA-0000012	0.15	(left rear/right front)(3 axle truck)		
(M3x14.0mm)(roundhead)(w/ lock washer)			(truck side screws mount from the top)		
7.) Screw	IA-0000217	0.15	Truck side (silver)(3 axle truck)	DB-2100037	8.00
(4/40x4.0mm)(washer head)			(left rear/right front)(Fairbanks Morse Demo)		
(CP)(Fairbanks Morse Demo)			(truck side screws mount from the top)		
Screw	IA-0000010	0.15	23.) T-bar (black)(plastic)	IG-0000001	0.50
(M3x4.0mm)(roundhead)			24.) Proto-Coupler® (black)	DD-4000001	10.00
(JCL)(Milwaukee Road)(Lackawanna)			(51.5mm long)		
8.) Chassis (black)	DH-2100029	*15.00	25.) Spring (nickel)	IE-0000022	0.50
(57.0x386.0mm)(for Proto-Sound engines)			(6.5x14.0mm)(w/ 0.5mm thick wire)		
(CP)(Fairbanks Morse Demo)			26.) Washer (4.5x10.0x0.5mm)	ID-0000009	0.15
Chassis (black)	DH-2100030	*15.00	27.) E-clip (3.0x8.0x0.5mm)	IF-0000002	0.15
(57.0x386.0mm)(for Proto-Sound engines)			28.) Pick-up	BD-0000050	5.00
(JCL)(Milwaukee Road)(Lackawanna)			(8.0x11.0mm roller)(24.0mm long)		
9.) Screw	IA-0000073	0.15	29.) Insulator (black)	BD-0000001	2.00
(M3x6.0mm)(flathead)			(pick-up)(bottom)(plastic)		
10.) Screw	IA-0000073	0.15	30.) Nut (nickel)(2.5x5.0x7.0mm)	IC-0000008	0.50
(M3x6.0mm)(flathead)			31.) Traction Tire	DE-0000018	0.75
11.) Pilot (black)	DG-2150030	15.00	32.) Truck (black)(powered)	DA-2050014	*35.00
(pilot has 1 screw hole for mounting pilot)			(3 axle)(1 screw hole for 1 screw mount pilot)		
Pilot (silver)	DG-2150031	15.00	33.) Screw	IA-0000073	0.15
(pilot has 1 screw hole for mounting pilot)			(M3x6.0mm)(flathead)		
(Fairbanks Morse Demo)			34.) Snow plow (black)	FH-2130001	3.00
12.) Screw	IA-0000028	0.15	Snow plow (silver)	FH-2130012	3.00
(4/40x6.0mm)(washer head)					
(CP)(Fairbanks Morse Demo)					
Screw	IA-0000016	0.15			
(M3x6.0mm)(roundhead)					
(JCL)(Milwaukee Road)(Lackawanna)					
13.) Bracket (black)(speaker)	IH-0000204	1.00			
(9.0x10.5mm)(2.0mm step)					
(rounded corners by mounting end)					
(JCL)(Milwaukee Road)(Lackawanna)					
14.) Screw	IA-0000031	0.15			
(M3x12.0mm)(washer head)(self-drilling)					
15.) Speaker	BF-4500010	8.95			
(Unison)(U5008BC3)(8 ohms)(0.5 watt)					
16.) Fuel tank (black)	FC-2100746	*15.00			
(has small square holes for speaker)					
(tapped for 4/40 screws)(CP)					
Fuel tank (silver)	FC-2100747	*15.00			
(has small square holes for speaker)					
(tapped for 4/40 screws)(Fairbanks Morse Demo)					
Fuel tank (black)	FC-2100748	*15.00			
(has small square holes for speaker)					
(tapped for M3 screws)					
(JCL)(Milwaukee Road)(Lackawanna)					
17.) Screw	IA-0000003	0.15			
(4/40x6.0mm)(roundhead)					
18.) Screw (nickel)	IA-0000015	0.15			
(M3x6.0mm)(roundhead)					

*Requires Exchange
All parts are priced as each



FM Trainmaster Diesel Engine Chassis Parts

